

Attico

Jervois Treasures

Hong Kong, Isola di Hong Kong, Il picco, Jervois Rd, 31, 249080,

PREZZO DI VENDITA

\$ 2100000.00

1130 qft 6 camere 3 camere da letto 3 bagni

3 pavimenti 3 qft Superficie del terreno 3 posti auto

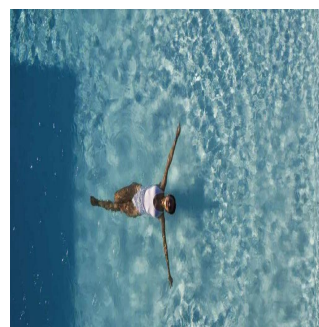
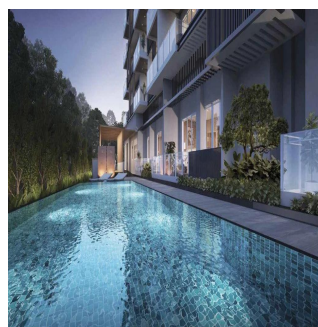


Fragrance Group Limited

Fragrance Group Limited

Singapore, Singapore - Ora locale

+65 6346 6888



Jervois Treasures, a laudable collection of 36 luxury homes at Singapore's most reputable private residential enclave. Nestled in District 10 where addresses include prestigious Nassim, Tanglin, Ardmore and Chatsworth, to name a few, Jervois Treasures offers the thrill of urban excitement that goes hand-in-hand with nature's tranquillity. EXPECTED T.O.P: Mar 2022

Disponibile Presso: 08.08.2019

Piano: 4 Pavimenti: 4 Anno Di Costruzione: 2017 Posti Auto: 4

Anno Di Costruzione: 2017

Tipo: Ufficio



Residents and investors will be pleased to know that amenities within proximity to Jervois Treasures are bountiful. Located along the city fringes, Jervois Treasures is just minutes' drive away to shopping paradise Orchard Road, Great World City, IKEA Alexandra, Vivo City, Sentosa and Universal Studios Singapore. For those working in town, be delighted to know that Jervois Treasures is within minutes' drive to major expressways (AYE, CTE, ECP) and CBD, MBFC, NUS, NUH, Science Park, Fushionpolis, Biopolis, Mapletree Business City. Closest MRTs include Tiong Bahru (EW17) and Redhill (EW18). Additionally, elite schools within 1-2 km of Jervois Treasures include Crescent Girls School, CHIJ St. Theresa's Convent, Radin Mas Primary School and Gan Eng Seng Primary School. Other prestigious schools in the area include River Valley Primary School, Raffles Girls' Secondary School, Hwa Chong Institution, Anglo-Chinese Junior College, Anglo-Chinese School (Independent). For toddlers, parents may consider sending them to the widely acclaimed Pat's Schoolhouse Tanglin, which is just minutes' drive from Jervois Treasures.

Amenita

ID ID Immobili

Servizi All'aperto