

Attico

# New York Style Warehouse And Office Suite

Gloucester St, 2, 2177,

287 qm 0 camere 0 camere da letto 0 bagni

0 pavimenti 0 qm Superficie del terreno 0 posti auto

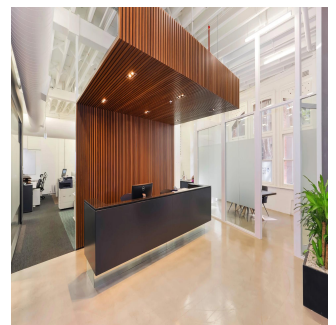
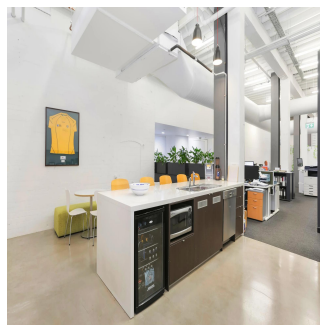
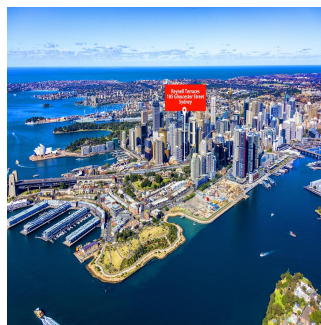


**Tim Noonan**

Noonan Property

Sydney, Australia - Ora locale

+61 416 286 129



- Stylish commercial suite of unrivalled quality - Vibrant, distinguished and inspired work space - Classic New York warehouse style features - Ultra high ceilings maximising light and space - Exposed services and ceiling beams throughout - Large windows with attractive tree line views - Polished concrete floors and pendant lighting - Quality fitout included with refined finishes \* - Imposing main reception with bespoke joinery - Two highly impressive meeting/client rooms - All meeting rooms with audio visual display - Full kitchen, bathroom and shower facilities - Integrated storage and large break out space - Two car spaces on title with direct suite access - Prestigious and iconic landmark CBD building - Part of the admired Reynell Terraces complex - Striking main lobby area with high spec finishes - Highly coveted location near Circular Quay - Close to Wynyard, Barangaroo and Martin Place - Popular, prestigious and tightly held precinct \* Subject to purchaser's make good requirements SIZE AND LOT DETAILS Suite 2, Lot 2 - 272m2 approx. Double car space, Lot 2 - 15m2 approx. Total area - 287m2 approx. Price: Under Offer

Disponibile Presso: 16.07.2019

Piano: 4 Pavimenti: 4 Anno Di Costruzione: 2017 Posti Auto: 4

Anno Di Costruzione: 2017

Tipo: Ufficio



Amenita

ID

ID Immobili

Servizi All'aperto