

Attico

Ground Floor Office Space For Rent In Sandton

Daisy St, 135, 2031,

PREZZO DI AFFITTO MENSILE

\$ 10366.00

PREZZO DI VENDITA

\$ 0.00

🏠 900 qm 🛏️ 0 camere 🛏️ 0 camere da letto 🚿 0 bagni

🏠 0 pavimenti 📏 0 qm Superficie del terreno 🚗 0 posti auto



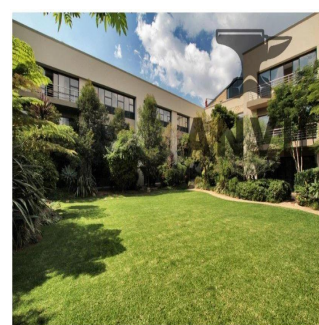
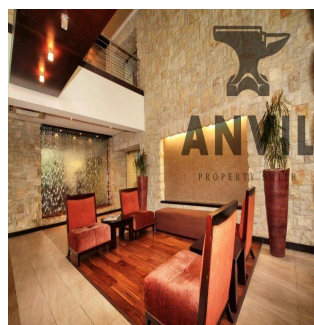
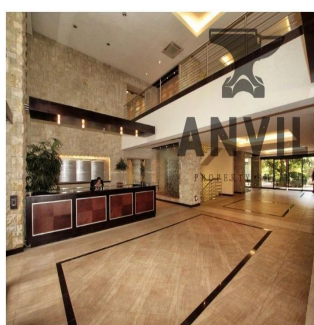
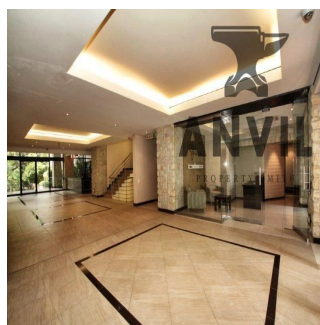
Jessica Oosthuizen

Space Online Group

Johannesburg, South Africa - Ora locale



27 72 781 1878



135 Daisy Street, Sandown in Sandton is a commercial property for blue chip tenants and it is available to lease. There is an selection of different size units available. The building has easy access to the M1 highway off Grayston Drive and is located close to Sandton CBD and the Gautrain station. There is 24 hour security with finger print access control to office units. There are open visitor parking's and underground tenant parking. Well maintained gardens wraparound the periphery of the building. Water features in the reception create a relaxed environment.

Disponibile Presso: 14.06.2019

Piano: 4 Pavimenti: 4 Anno Di Costruzione: 2017 Posti Auto: 4

Anno Di Costruzione: 2017

Tipo: Ufficio



Amenita

ID ID Immobili

Servizi All'aperto

Sicurezza 24 ore su 24