

Attico

Impressive 4 Bedroom Family House For Rent In Hyde Park

Maldive, Soneva Jani, Hangnaameedhoo, 2nd Rd, , 2196,

PREZZO DI AFFITTO MENSILE

\$ 5466.00

PREZZO DI VENDITA

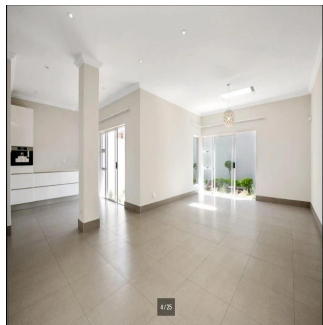
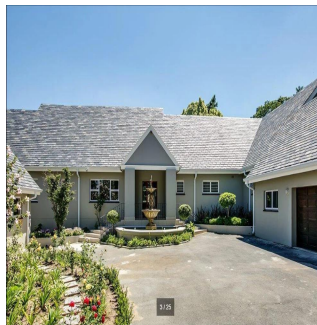
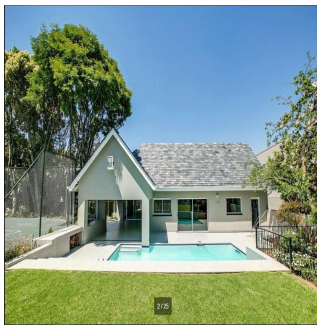
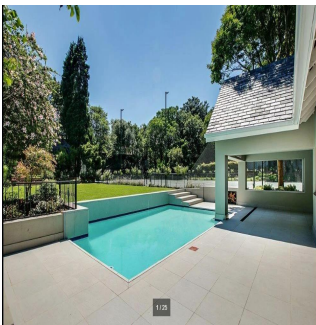
\$ 0.00

🏠 870 qm 🏠 9 camere 🛏️ 4 camere da letto 🚿 5 bagni

🏠 5 pavimenti 📏 5 qm Superficie del terreno 🚗 5 posti auto

Ty Bello
Tttytr
Abuja, Nigeria - Ora locale

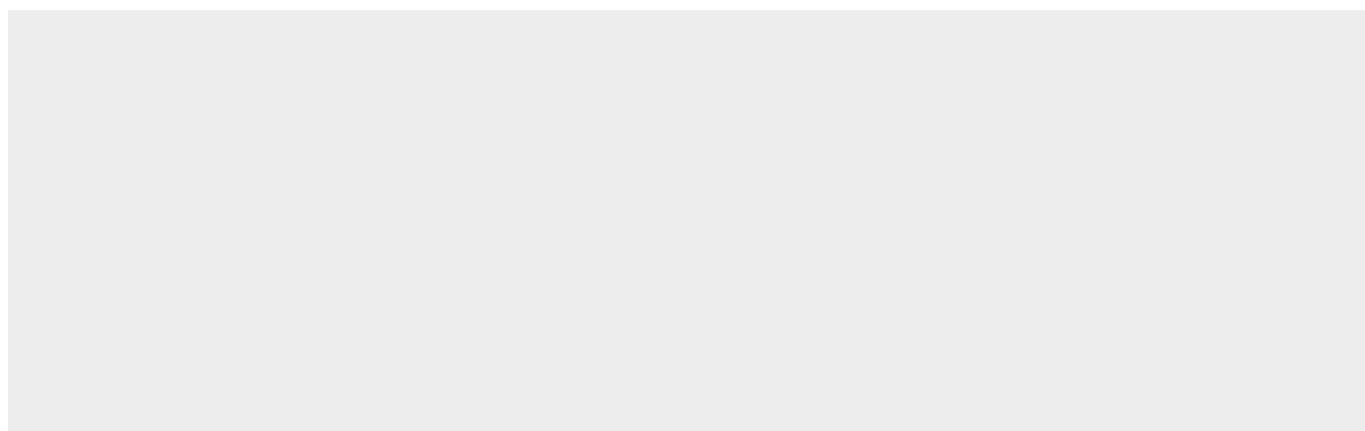
📞 234 986543223



IMPRESSIVE 4 BEDROOM FAMILY HOME Flawless design with a neutral colour palette this single storey spectacular family home offers a setting with vistas of trees and stunning landscaped garden and water features. Clean lines characterize the modern fluidity allowing easy comfortable indoor/outdoor entertaining with bar on an extensive covered patio to sparkling pool and tennis court. Modern open plan kitchen and separate scullery and pantry with top quality finishes, central island, built-in coffee machine, integrated fridge/freezer and walk in fridge. 4 bedrooms are on the east wing with sliding doors opening to the garden. The master suite has a full bathroom, double shower and walking in dressing room. Security comprises of state of the art alarm system connected to mobile devices, CCTV, high perimeter walls with electric fencing, beams and double electric gates. Double automated garage, double carport and staff accommodation. The property also has a separate complete 2 bed cottage with separate entrance. Positioned on a large stand to maximize building this property presents a rare opportunity to realize one's own trophy home. In close proximity to Hyde Park Shopping Centre and available immediately!

Disponibile Presso: 28.05.2019

Piano: 4 Pavimenti: 4 Anno Di Costruzione: 2017 Posti Auto: 4 Anno Di Costruzione: 2017 Tipo: Ufficio



Amenita

ID	ID Immobili	Aria condizionata	Sistema di allarme
Cctv	Sistema antincendio a pioggia		

Servizi All'aperto

Sicurezza 24 ore su 24	Balcone	Completamente recintato	Garage
Giardino paesaggistico	Piscina	Campo da tennis	