

Attico

## High End 2 Bedroom Hotel Apartment Alef Residences | Palm Jumeirah

, , ,

PREZZO DI VENDITA

**USD 4083000.00**

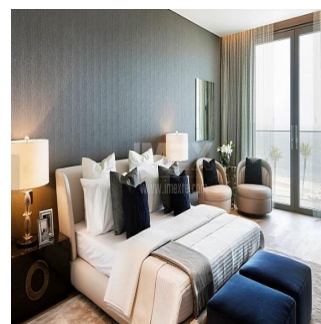
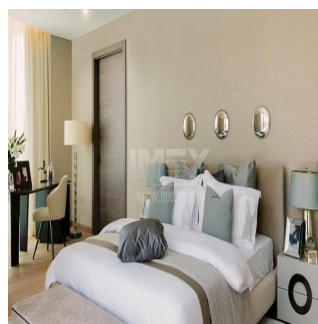
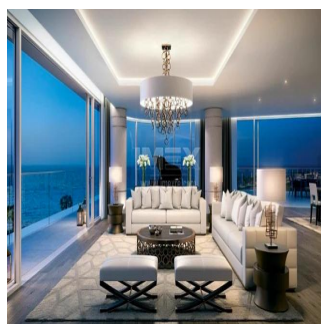
🏠 446 qm    📺 camere    🛏 2 camere da letto 🚿 2 bagni

🏠 2 pavimenti    📏 2 qm Superficie del terreno    🚗 2 posti auto

**Pgs Realty**

Pgs Realty

Panamá, Panama - Ora locale

**+507 391-8878**

Purchase one of 104 homes located in eight mansions featuring their own dedicated lobbies and private elevators on the western Crescent of Palm Jumeirah, the hottest high-end Dubai location. Ultra-premium fully-serviced 5 star apartments for investments and for comfort living. Up to 8 per cent annual ROI Lease Management Property Management Quality House-keeping Private Club 104 with 5-star VIP Service Seaview and 500-meters-long Private Beach Philippe Starck mixers Floor-to-ceiling Glass windows Private Beach Cabanas Landscaped Gardens Huge Wraparound Balconies

Disponibile Presso: 01.01.1970

Piano: 4    Pavimenti: 4    Anno Di Costruzione: 2017    Posti Auto: 4

Anno Di Costruzione: 2017

Tipo: Ufficio



Built from the first letter of the Arabic alphabet, The Alef, meaning 'first and foremost' signifies a point of infinite possibility. Born out of a desire to redefine luxury, it represents a physical space premium to its core, and a quality of living beyond all else. The Alef brand is truly the first of its kind – through design, space, location, and genuine lifestyle experiences. Surrounded by the Gulf, The Alef Residences is situated on the West Crescent of Palm Jumeirah, covering 46840 sq m, all serviced by W – The Palm. Everything is within reach, shopping, dining, even access routes as far as the airport are effortless.

## Amenita

ID ID Immobili

## Servizi All'aperto