

Penthouse

# Premium High-Rise Commercial Suite With Expansive View

Afrique du Sud, Cap Occidental, Cap, Bligh St, 37, 2000,

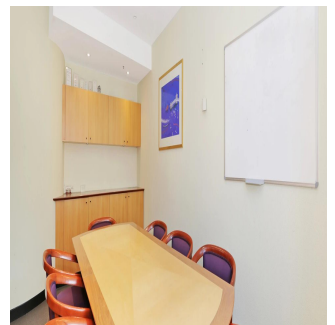
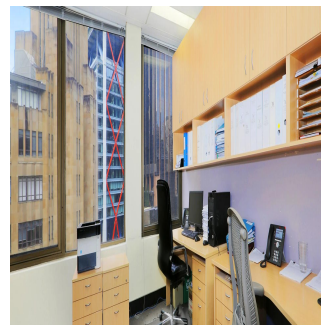
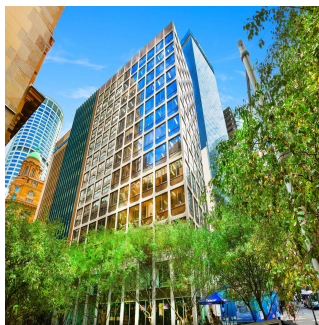
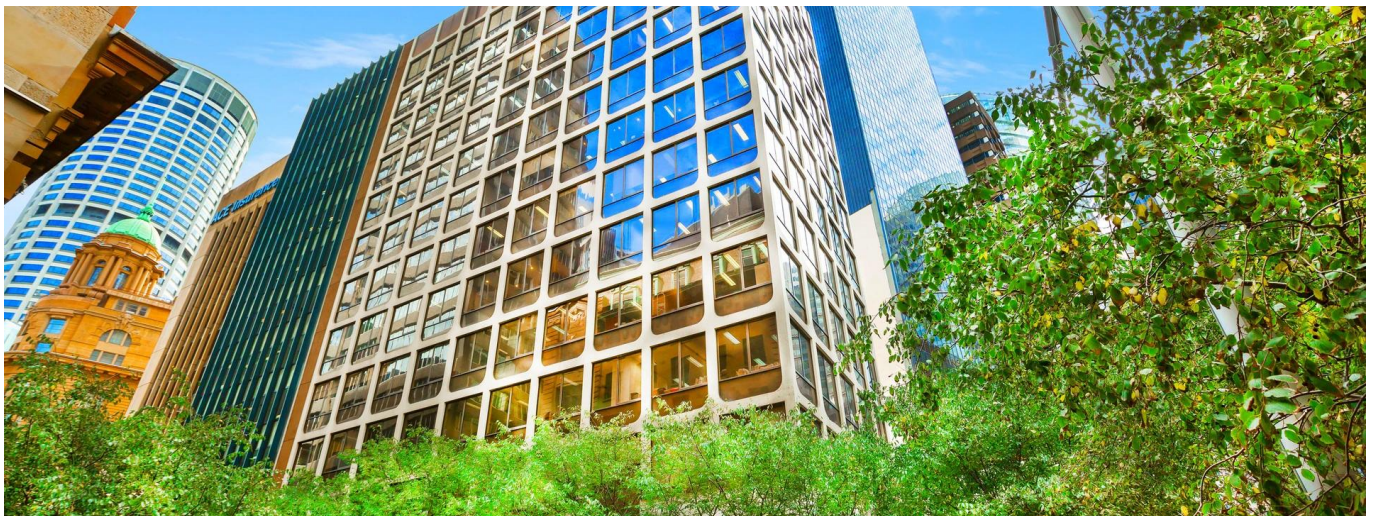
- 🏠 106 qm
- 🛏️ 0 chambres
- 📄 0 Exhibition results
- 🚿 0 salles de bains
- 🏠 0 planchers
- 📏 0 qm superficie du territoire
- 🚗 0 places pour voitures



**Tim Noonan**

Noonan Property  
Sydney, Australia - Heure locale

📞 +61 416 286 129



One of Sydney's best commercial office suites - Truly unique and irreplaceable opportunity - Envious corner positioning and excellent light - Highrise floor with expansive CBD skyline views - Large windows wrapping the entire Eastern facade - Exclusive, impressive and inspired work space - Quality fitout with bespoke custom cabinetry - Professional reception and boardroom areas - Mixture of offices and open plan work spaces - Highly acclaimed commercial strata building - Striking main lobby area with high spec finishes - Excellent building services including three lifts - Opposite the new Martin Place Metro Station - Handy to Sydney's finest restaurants and bars - Landmark location in Sydney's core financial hub - Close to Wynyard, Circular Quay and Barangaroo - Minutes to Royal Botanic Gardens and Martin Place - Surrounded by billions of new CBD development - Popular, prestigious and tightly held precinct

**LOT DETAILS AND SIZE** Suite 1104, Lot 74 - 106 sqm approx. OUTGOINGS Strata levies - \$3,938 per quarter approx. Council rates - \$782 per quarter approx. Water rates - \$21 per quarter approx. Price: Under Offer

Disponible Apr?s De :

16.07.2019

Le Sol : 4 Les Sols : 4 Annee De

Places De Voitures : Ann?e De Construction : 2017

Type: Bureau

Construction : 2017 4



## Commodit?s

ID Reference Propriete

## Am?nagements Ext?rieurs