

Penthouse

# New York Style Warehouse And Office Suite

Gloucester St, 2, 2177,

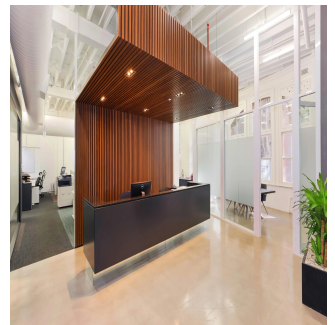
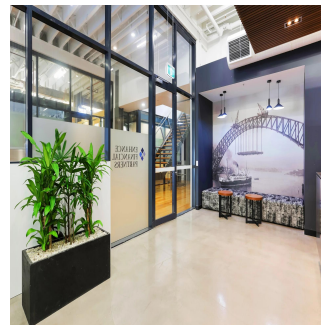
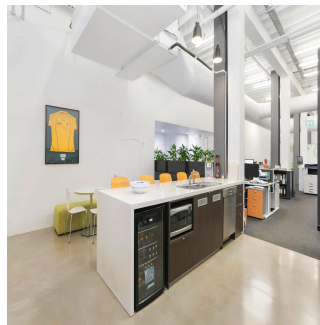
- 287 qm
- 0 chambres
- 0 Exhibition results
- 0 salles de bains
- 0 planchers
- 0 qm superficie du territoire
- 0 places pour voitures



**Tim Noonan**

Noonan Property  
Sydney, Australia - Heure locale

+61 416 286 129



- Stylish commercial suite of unrivalled quality - Vibrant, distinguished and inspired work space - Classic New York warehouse style features - Ultra high ceilings maximising light and space - Exposed services and ceiling beams throughout - Large windows with attractive tree line views - Polished concrete floors and pendant lighting - Quality fitout included with refined finishes \* - Imposing main reception with bespoke joinery - Two highly impressive meeting/client rooms - All meeting rooms with audio visual display - Full kitchen, bathroom and shower facilities - Integrated storage and large break out space - Two car spaces on title with direct suite access - Prestigious and iconic landmark CBD building - Part of the admired Reynell Terraces complex - Striking main lobby area with high spec finishes - Highly coveted location near Circular Quay - Close to Wynyard, Barangaroo and Martin Place - Popular, prestigious and tightly held precinct \* Subject to purchaser's make good requirements

SIZE AND LOT DETAILS Suite 2, Lot 2 - 272m2 approx. Double car space, Lot 2 - 15m2 approx. Total area - 287m2 approx. Price: Under Offer

Disponible Apr?s De :

16.07.2019

Le Sol : 4 Les Sols : 4 Annee De Places De Voitures : Ann?e De Construction : 2017 Type: Bureau

Construction : 2017 4



Commodit?s

ID

Reference Propriete

Am?nagements Ext?rieurs