

Penthouse

# Free Standing Building Available To Let And For Sale Situated In Kempton Park

????????? ?????????? ??????????, ??????, ??????, , , 1619,


PRIX DE LOCATION MENSUEL

**\$ 15768.00**

PRIX DE VENTE

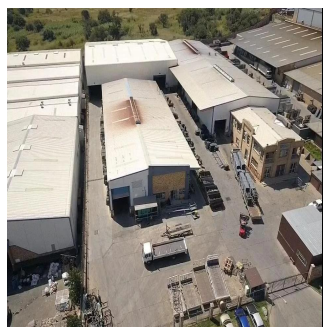
**\$ 2432175.00**

- 🏠 4789 qm
- 🛏️ 0 chambres
- 🚗 0 Exhibition results
- 🚿 0 salles de bains
- 🏠 0 planchers
- 📏 0 qm superficie du territoire
- 🚗 0 places pour voitures



**Dion Williams**  
 Api Property Group  
 Sandton, South Africa - Heure locale

+27 0795174743

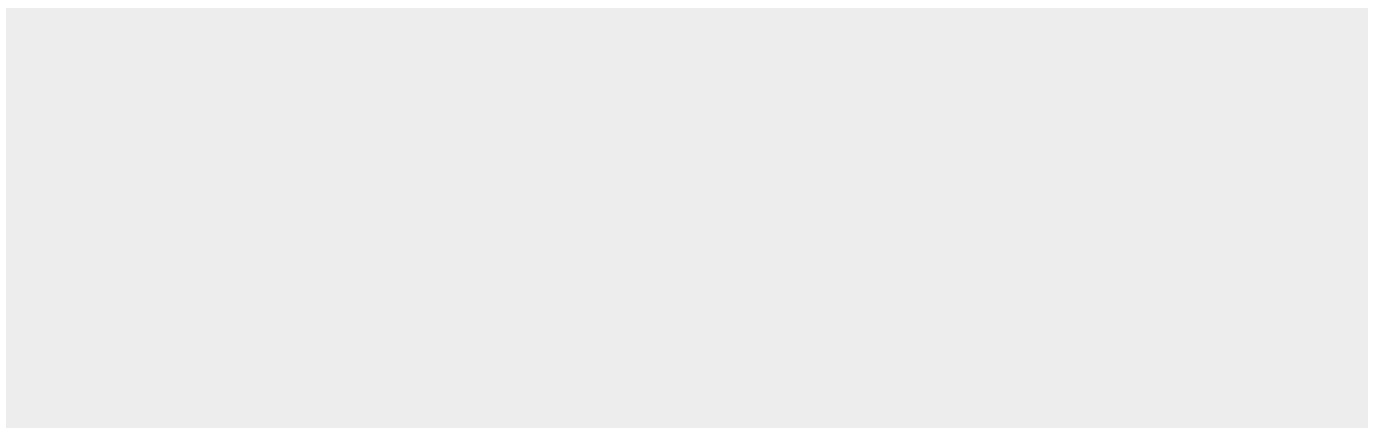


Upmarket, stand alone industrial building comprising of a 4,180sqm warehouse, 609sqm office component and is situated on a 9,217sqm stand. Very easy access available with multiple entrance points into the property. There's ample, secure staff and visitor parking bays. The warehouse has excellent height of 11 meters to the eaves, 1 MVA three phase electrical power supply as well as multiple roller shutter doors allowing for quick and easy access for large trucks. Double volume, A grade office component present with male and female ablution facilities. This immaculate property is available either for rental at US\$3.4/sqm therefore asking US\$15,767.56 excluding VAT and utilities or can be purchased for US\$2,432,174.10 excluding VAT. Rates: US\$1,810.85. \*\*\*Cranes are not a part of premises, however, owner willing to buy cranes from purchaser.

Disponible Apr?s De :

08.07.2019

Le Sol : 4 Les Sols : 4 Annee De Construction : 2017 Places De Voitures : 4 Ann?e De Construction : 2017 Type: Bureau



Spartan, Kempton Park Spartan Spartan is a formidable industrial area situated within the popular Johannesburg suburb of Kempton Park. Which has been a part of the City of Ekurhuleni Metropolitan Municipality since 2000.

### Commodit?s

ID	Reference Propriete	Climatisation
----	---------------------	---------------

### Am?nagements Ext?rieurs

Securite 24 heures sur 24