

Penthouse

Ground Floor Office Space For Rent In Sandton

Daisy St, 135, 2031,

PRIX DE LOCATION MENSUEL

USD 10366.00

PRIX DE VENTE

USD 0.00

🏠 900 qm

🛏️ 0 chambres

🚗 0 Exhibition results

🚿 0 salles de bains

🏗️ 0 planchers

📏 0 qm superficie du territoire

🚗 0 places pour voitures



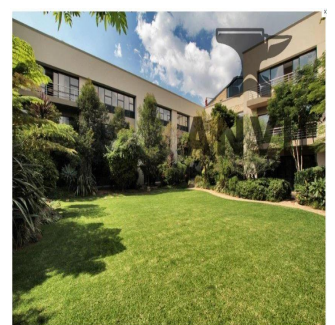
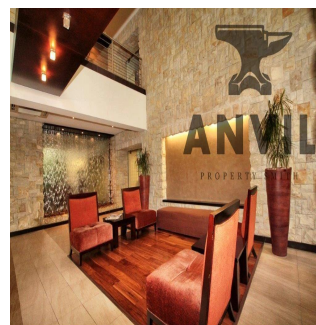
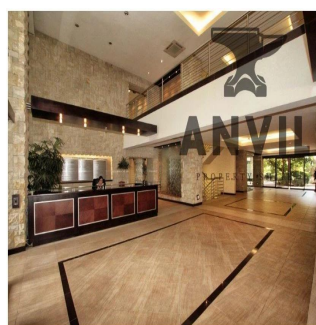
Jessica Oosthuizen

Space Online Group

Johannesburg, South Africa - Heure locale



27 72 781 1878



135 Daisy Street, Sandown in Sandton is a commercial property for blue chip tenants and it is available to lease. There is an selection of different size units available. The building has easy access to the M1 highway off Grayston Drive and is located close to Sandton CBD and the Gautrain station. There is 24 hour security with finger print access control to office units. There are open visitor parking's and underground tenant parking. Well maintained gardens wraparound the periphery of the building. Water features in the reception create a relaxed environment.

Disponible Auapr?s De :

14.06.2019

Le Sol : 4 Les Sols : 4 Annee De Construction : 2017 Places De Voitures : 4 Ann?e De Construction : 2017 Type: Bureau



Commodit?s

ID Reference Propriete

Am?nagements Ext?rieurs

Securite 24 heures sur 24