

Penthouse

# 4 Bedroom Townhouse For Rent In Hyde Park

Espagne, Andalousie, Benalmádena, , , 2196,

PRIX DE LOCATION MENSUEL

**\$ 6156.00**

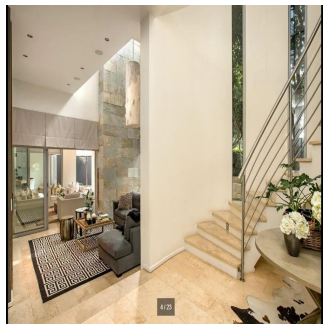
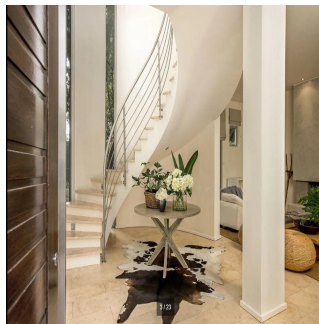
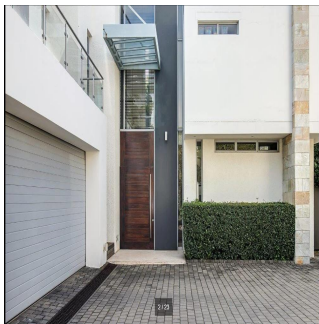
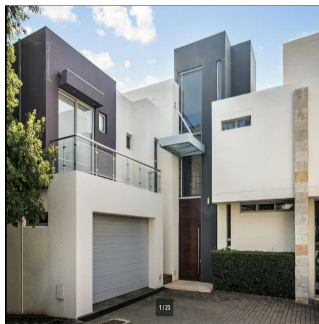
PRIX DE VENTE

**\$ 0.00**

- 🏠 550 qm
- 🛏️ 8 chambres
- 🚗 4 Exhibition results
- 🚿 4 salles de bains
- 🏠 4 planchers
- 📏 4 qm superficie du territoire
- 🚗 4 places pour voitures

**Ty Bello**  
Tttyr  
Abuja, Nigeria - Heure locale

📞 234 986543223

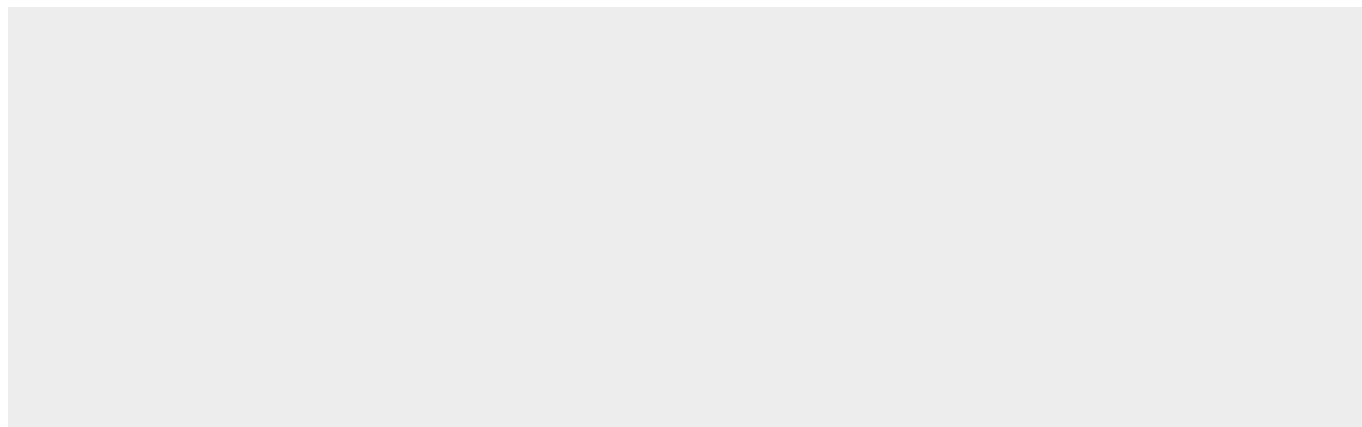


FUTURE CLASSIC Modern, spacious and light-filled spaces flow easily and are accented with stone and glass in a warm, neutral palette. Furnished in a contemporary style with a restrained elegance and a luxe feel. Formal lounge with a gas fireplace, double volume living room and a spacious dining room all lead out to the patio and garden. Fitted gas BBQ on the patio makes for effortless outdoor entertaining overlooking the established garden and pool with a soothing water-feature. Served by a state-of-the-art kitchen with top quality appliances and staff suite. Upstairs are 4 bedrooms all en-suite with air-conditioning and under carpet heating and a spacious pyjama lounge, all secured by a safe haven. Special features include; polished Travertine floors, bespoke fittings and finishes, air-conditioning and heating, central vacuuming system, fitted sound system and a 24 hour guard. Hyde Park is centrally located to some of the best private and public schools in Johannesburg; Hyde Park High, Roedean, French School, St David's, St Johns to name a few and is close to a variety of shopping centres such as Hyde Park Corner, Sandton City, Illovo precinct and Melrose Arch.

Disponible Apr?s De :

28.05.2019

Le Sol : 4 Les Sols : 4 Annee De Construction : 2017 Places De Voitures : 4 Ann?e De Construction : 2017 Type: Bureau



## Commodit?s

ID	Reference Propriete	Climatisation	Systeme d'alarme
----	---------------------	---------------	------------------

## Am?nagements Ext?rieurs

Securite 24 heures sur 24	Balcon	Piscine
---------------------------	--------	---------