

Penthouse

# Sophisticated 7 Bedroom Family House For Sale In Bryanston

, , 2191,

PRIX DE VENTE

**USD 3872000.00**

🏠 2150 qm

🛏️ 14 chambres

🚗 7 Exhibition results

🚿 7 salles de bains

🏠 7 planchers

📏 7 qm superficie du territoire

🚗 7 places pour voitures



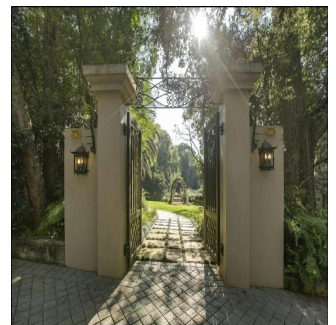
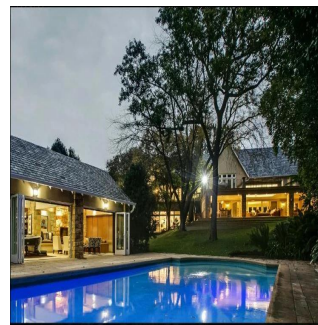
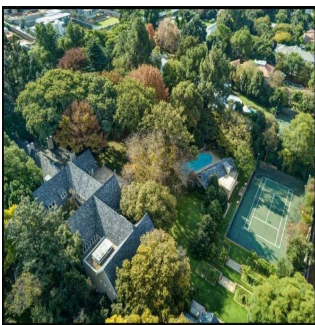
**Nelson Ferreira**

Pam Golding Properties Hyde Park

Sandton, South Africa - Heure locale



27 82 600 4455

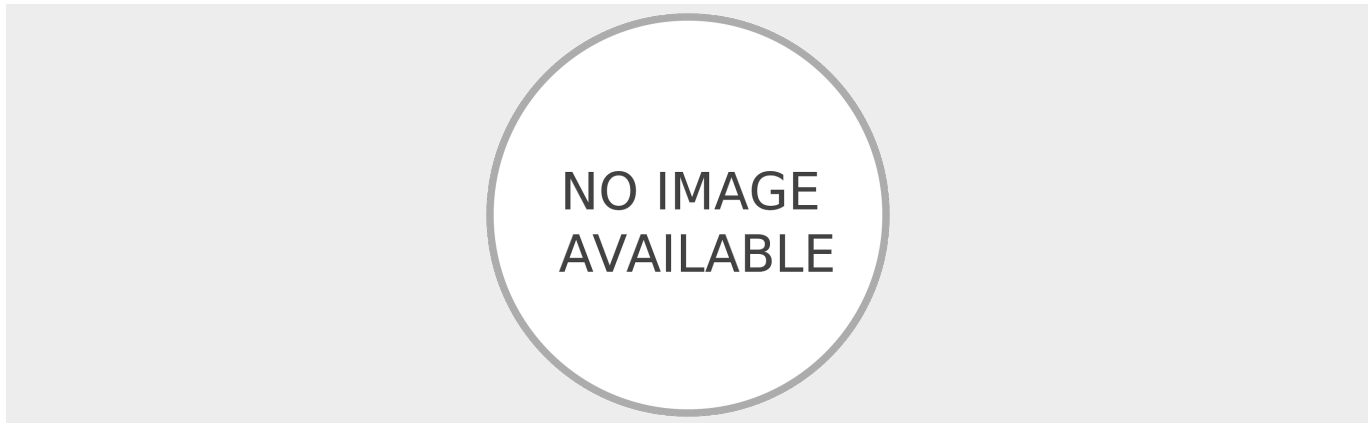


GENTLEMAN'S RESIDENCE IN PARK-LIKE ESTATE OF 10 538m<sup>2</sup> IN ECCLESTON CRESCENT. This sophisticated family residence (2 150m<sup>2</sup>), set in a park-like estate of 10 538m<sup>2</sup>, offers a lush, classically inspired, landscaped garden, teeming with a variety of plants, trees, manicured hedges and pathways. On arrival at the property, towering double gates give way to a long, winding driveway leading to a courtyard with an impressive water feature providing guests with a memorable welcome. This extraordinary Bryanston home with its five bedroom suites, cottage, summerhouse, guest flatlet, floodlit court and two swimming pools offers the investor a once-in-a-lifetime opportunity. A homely wood-burning fireplace immediately catches the eye when stepping into the grand ENTRANCE HALL, from which a spiral staircase leads to a STUDY complete with wooden flooring, lounge and interleading doors to the ample patio. In the LOUNGE your eyes are drawn to the lofty ceilings with exposed trusses, the exquisite sandstone flooring and elegant French doors opening to the garden. Special dinner parties are to be enjoyed in the superbly appointed DINING ROOM. A spacious MODERN KITCHEN opens to a well-conceived central courtyard with impressive water features and koi pond where a beautifully designed central gazebo with fragrant lavender hedges and intricate herringbone walkways create a distinctly country atmosphere away from the bustle of our urban lifestyle. Discerning wine connoisseurs will delight in the impressive temperature-controlled 5000 bottle capacity downstairs WINE CELLAR where the wrought-iron balustrade, spiral staircase and elegant fittings give the wood-decked space a distinctly old-world feel. Downstairs, the area also offers a glamorous GUEST CLOAKROOM and spacious FAMILY ROOM that spills out onto an expansive covered patio. In close proximity is a truly magical, heated, INDOOR POOL with a water jet display feature. Upstairs the MASTER SUITE includes a private lounge, a spectacular dressing room with bespoke wooden cupboarding and feature centre island. In addition there are FOUR large BEDROOM SUITES with modern bathrooms and fine views of the garden. The property also offers a SUMMERHOUSE, an OUTDOOR POOL, JACUZZI, pizza and braai area - all artistically blending with the magnificent garden surround. The state-of-the-art security system includes 16 CCTV cameras spread throughout the entrance, home and garden .

Disponible Apr?s De :

14.05.2019

Le Sol : 4    Les Sols : 4    Annee De                      Places De Voitures :    Ann?e De Construction : 2017    Type: Bureau  
Construction : 2017    4



### Commodit?s

ID    Reference Propriete

### Am?nagements Ext?rieurs