

Penthouse

# Stunning Villa For Sale: Garden Homes Palm Jumeirah Frond C

3,3

PRIX DE VENTE

**\$ 10000000.00**

5000 qft

chambres

4 Exhibition results

5 salles de bains

5 planchers

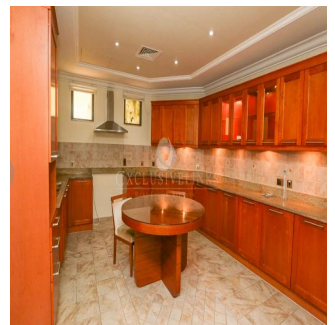
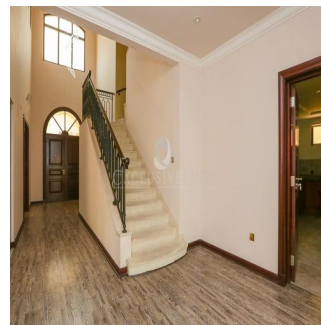
5 qft superficie du territoire

5 places pour voitures



**Jcm Bienes Ra?ces**  
 Jcm Bienes Ra?ces  
 Naucalpan de Juárez, Mexico - Heure locale

+52 55 8421 5859



We are pleased to present this stunning Atrium Entry Garden Home for sale located on Palm Jumeirah C frond in the most desirable location securing the buyer open expansive views of the Burj Al Arab, enviable by any home owner. Offering a plot size of 7,000 sq. ft. with an internal living space of 5,000 sq. ft. this home perfectly combines luxury indoor and outdoor living .An impressive address to say the least,occupied by the first owner. This well cared for villa is arranged over two floors and offers four en-suite bedrooms The ground floor offers a modern style kitchen, and large sitting and dining areas which open onto the manicured garden and private swimming pool. All four bedrooms are situated on the first floor, one of which located to the front of the villa with a large balcony and breath-taking sea views and the master bedroom enjoying a luxurious bathroom and an expansive closet area

Disponible Aupr?s De :

01.01.1970

Le Sol : 4 Les Sols : 4 Annee De Construction : 2017 Places De Voitures : 4 Ann?e De Construction : 2017 Type: Bureau



Garden Homes are typically four bedroom luxury villas located on the fronds of Palm Jumeirah.

### Commodit?s

ID Reference Propriete Balcon Armoires encastrées  
Climatisation centrale

### Am?nagements Ext?rieurs

Securite 24 heures sur 24 Jardin Piscine