

Penthouse

The Azure

, , 8005,

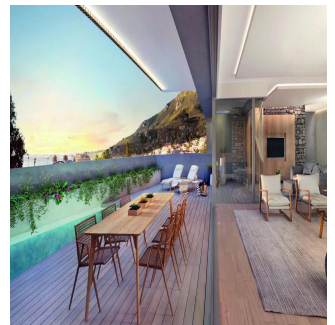
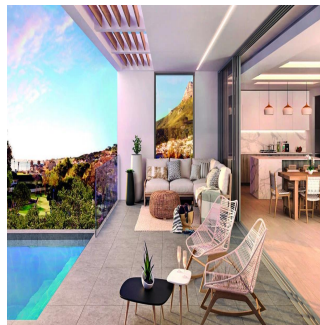
- qm
- chambres
- Exhibition results
- salles de bains
- planchers
- qm superficie du territoire
- places pour voitures



David Sedgwick

Horizon Capital Residential
Cape Town, South Africa - Heure locale

+27 072 385 4386



The four residences are works of contemporary architecture, integrated into their surroundings through the use of natural materials and simple primal forms. As homes in one of the country's prime seaside locations, they are designed to combine simplicity and sophistication, relaxation and urbanity. With a strong flow between the inside and outside, the homes are connected to magnificent views on all sides. At the heart of each building is a green space – either a water-wise garden or courtyard – that continues nature's presence into the interior of each residence.

Disponible Aupr?s De :

02.05.2019

Le Sol : 4 Les Sols : 4 Annee De Construction : 2017 Places De Voitures : 4 Ann?e De Construction : 2017 Type: Bureau



Nestled between Lion's Head, The Twelve Apostles and Camps Bay Beach, The Azure offers a sophisticated and relaxed lifestyle with contemporary yet timeless design. Four landmark residences in the heart of Camps Bay Village, just 150m from the beach.

Commodit?s

ID Reference Propriete

Am?nagements Ext?rieurs