

Penthouse

21 Exclusive Luxury Apartment In The The Aster

, , 8001,

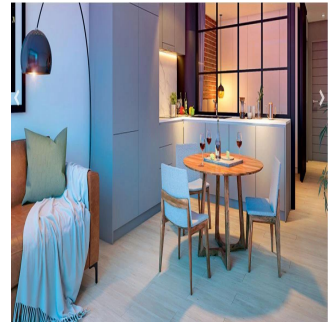
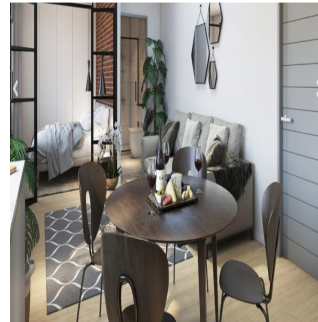
- 188 qm
- chambres
- Exhibition results
- salles de bains
- planchers
- qm superficie du territoire
- places pour voitures



David Sedgwick

Horizon Capital Residential
Cape Town, South Africa - Heure locale

+27 072 385 4386



21 exclusive apartments 4 storeys Secure parking, CCTV, access control & electric fencing Communal pool & braai deck Fibre Internet connectivity & DSTV-ready Completion: Spring 2020 Key features Panoramic views of Table Mountain Heat pump with solar water heating Water-efficient fittings Low-voltage LED fittings Oggie oak flooring and air-conditioning to penthouses Private roof-deck and pool for each penthouse SMEG built-in oven, hob and extractor Floor-to-ceiling aluminium and glass sliding doors Apartment mix 4 studio apartments [33m2 - 40m2] 8 one-bedroom apartments [44m2 - 51m2 including terrace] 7 two-bedroom apartments [58m2 – 133m2 including terrace] 2 two-bedroom penthouses [188m2 -190m2 each including terrace and roof-deck]

Disponible Au pr?s De :

02.05.2019

Le Sol : 4 Les Sols : 4 Annee De Construction : 2017 Places De Voitures : 4 Ann?e De Construction : 2017 Type: Bureau



The Aster is located in Oranjezicht, a heritage rich suburb set on the site of the old Oranjezicht farm, which stretched from Table Mountain's lower slopes all the way down to the City Bowl. This leafy inner-city suburb has retained its peaceful charm even as the city has grown up around it. Homes in the neighbourhood are a varied mix of Victorian, Georgian, Edwardian and Modern architecture. Living at The Aster means waking up to the warm Cape Town sunrise. It means being part of a neighbourhood, where you're close to everything you need for the lifestyle you love: a stroll in De Waal Park, a day at Clifton or Camps Bay beach, meeting friends at a Kloof Street coffee shop, dinner at Cape Town's best restaurants, a hike up Lion's Head, and all-day panoramic views of beautiful Table Mountain. The Aster. Your City, just down the road. Your Community, just next door. Your Entertainment, on your doorstep. And your Sanctuary, all around you. 240m to MyCiTi public transport 270m to Bombay Bicycle Club, Bacini's Pizzeria and Liquorice & Lime 600m to Café Paradiso & Black Sheep Restaurants 1.2km to Lifestyle on Kloof Shopping Centre 1.3km to The Mount Nelson Hotel 2.7km to Round House Restaurant 3.9km to Camps Bay Beach & Promenade 4.6km to V&A Waterfront 4.7km to Clifton Beaches

Commodit?s

ID Reference Propriete

Am?nagements Ext?rieurs