

Penthouse


4 Bedroom Apartment For Sales In The View At Kismis

Hong Kong, Hong Kong Island, Sheung Wan, Lor Kismis, 18, ,

PRIX DE VENTE

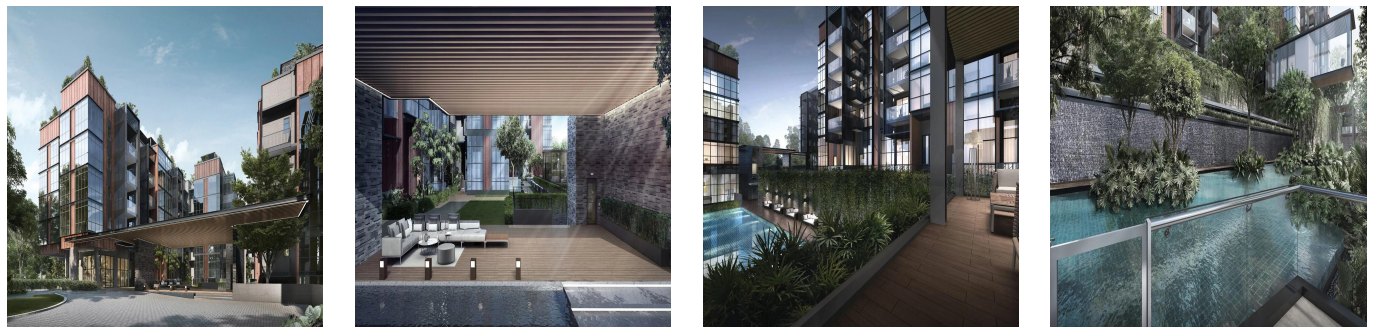
USD 1425900.00

- 🏠 94 qm
- 🛏️ 4 chambres
- 📄 4 Exhibition results
- 🚿 0 salles de bains
- 🏠 0 planchers
- 📏 0 qm superficie du territoire
- 🚗 0 places pour voitures



Roxy-Pacific Holdings Limited
 Roxy Pacific Holdings Limited
 Singapore, Singapore - Heure locale

+65 6440 9878



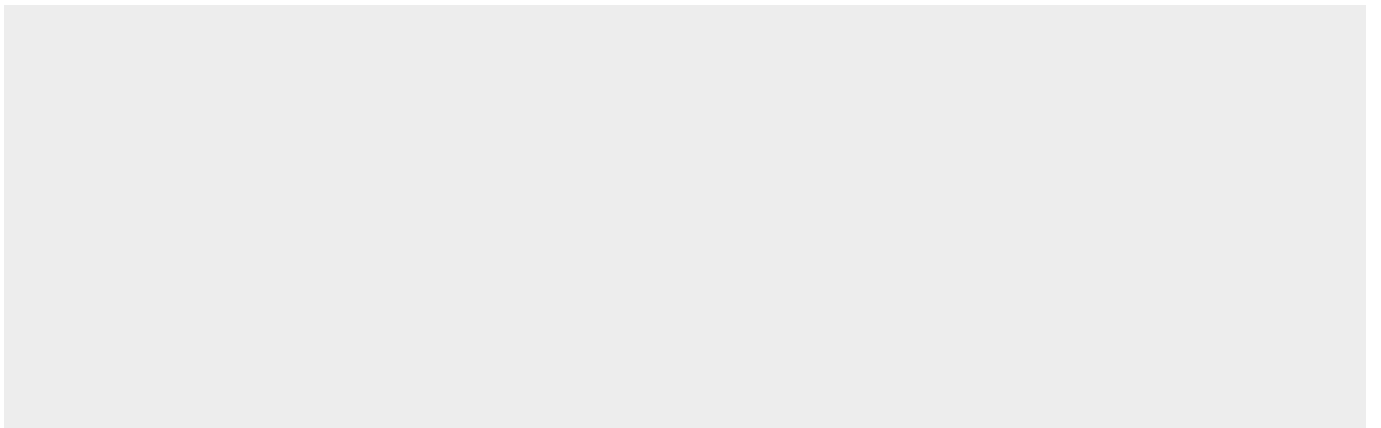
Inspired by the style of modern Tuscany, View at Kismis exudes a charm of its own. Retreat into your own home surrounded by rustic charm and be lavished with 50 facilities within the development — each crafted to evoke intimacy and tranquility. Seated within an enclave of landed houses, View at Kismis is set against a backdrop of nature for all who are in pursuit of their very own exclusive getaway. Contact: +65 3138 9676 TOP: 1st May 2023

Disponible Aupr?s De :

08.08.2019

Le Sol : 4 Les Sols : 4 Annee De Places De Voitures : Ann?e De Construction : 2017 Type: Bureau

Construction : 2017 4



Found within 10 minutes drive from View at Kismis, Jurong Lake District offers businesses a vibrant ecosystem for advancement. Built upon the concept of flexible spaces and active programming that caters to different business and lifestyle needs, this up and coming economic centre is poised to be the next Central Business District (CBD) in Singapore. Similarly, a mere stone's throw away lies the startlingly large variety of fun activities that will provide hours of laughter and joy for the family. Economic centres: • Jurong Lake District • International Business Park • one-north

Commodit?s

ID Reference Propriete

Am?nagements Ext?rieurs