

Penthouse

Spacious Two Bedroom Residences In Development

Warrigal Rd, 37-41, 3166,

PRIX DE VENTE

USD 570000.00

🏠 2 qm

🛏️ 4 chambres

📄 2 Exhibition results

🚿 2 salles de bains

🏠 2 planchers

📏 2 qm superficie du territoire

🚗 2 places pour voitures



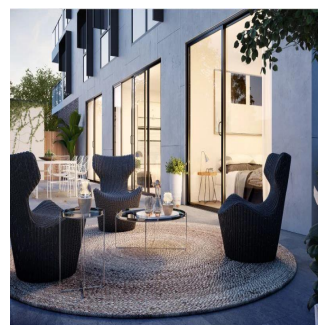
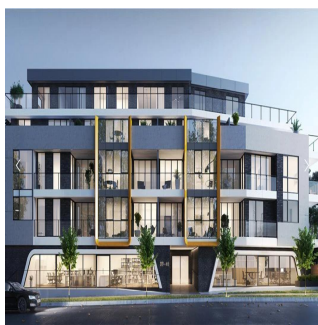
Michael Lang

Castran Gilbert

South Yarra, Australia - Heure locale



+61 407 766 771

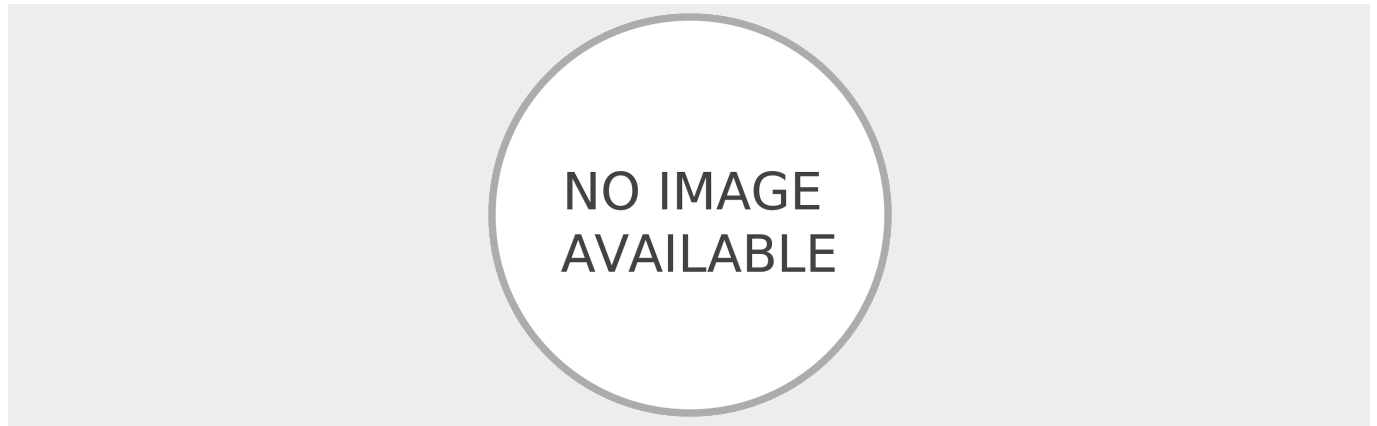


• ONLY 5% DEPOSIT PAYABLE FOR A LIMITED TIME! • Stunning selection of spacious two bedroom residences • All with secure car parking & additional storage • Architecture by The Buchan Group • Close to parklands, shops, eateries & public transport • Under construction, estimated completion November 2019 Situated in the vibrant Hughesdale-Oakleigh precinct, HUE delivers a lifestyle of utmost effortlessness and accessibility. Featuring a striking contemporary design by The Buchan Group, the spacious two bedroom residences deliver light-filled open plan living spaces, serene courtyards and generous terraces, designer kitchens with stone bench tops and European appliances, timber flooring and other high quality appointments. Each residence is further accompanied by one or two secure car spaces on title, plus additional storage. HUE enjoys the convenience of having shops, eateries and every conceivable amenity at its doorstep. For those seeking a world-class retail experience, Chadstone Shopping Centre is just a quick 5-minute drive away. Construction is currently underway, with completion estimated for November 2019. Don't miss out – enquire now.

Disponible Apr?s De :

16.07.2019

Le Sol : 4 Les Sols : 4 Annee De Construction : 2017 Places De Voitures : 4 Ann?e De Construction : 2017 Type: Bureau



Commodit?s

ID Reference Propriete

Am?nagements Ext?rieurs