

Penthouse

High End 2 Bedroom Hotel Apartment Alef Residences | Palm Jumeirah

'''

PRIX DE VENTE

USD 4083000.00

🏠 446 qm

🛏️ 2 chambres

🚗 2 Exhibition results

🚿 2 salles de bains

🏠 2 planchers

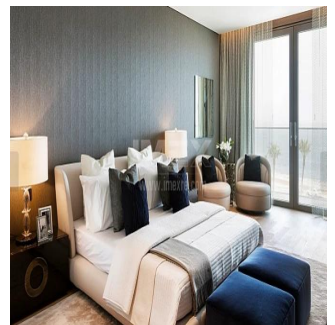
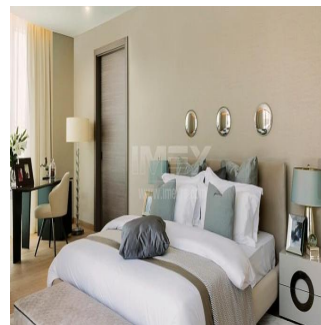
📐 2 qm superficie du territoire

🚗 2 places pour voitures



Pgs Realty
Pgs Realty
Panamá, Panama - Heure locale

+507 391-8878



Purchase one of 104 homes located in eight mansions featuring their own dedicated lobbies and private elevators on the western Crescent of Palm Jumeirah, the hottest high-end Dubai location. Ultra-premium fully-serviced 5 star apartments for investments and for comfort living. Up to 8 per cent annual ROI Lease Management Property Management Quality House-keeping Private Club 104 with 5-star VIP Service Seaview and 500-meters-long Private Beach Philippe Starck mixers Floor-to-ceiling Glass windows Private Beach Cabanas Landscaped Gardens Huge Wraparound Balconies

Disponible Apr?s De :

01.01.1970

Le Sol : 4 Les Sols : 4 Annee De Construction : 2017 Places De Voitures : 4 Ann?e De Construction : 2017 Type: Bureau



Built from the first letter of the Arabic alphabet, The Alef, meaning ‘first and foremost’ signifies a point of infinite possibility. Born out of a desire to redefine luxury, it represents a physical space premium to its core, and a quality of living beyond all else. The Alef brand is truly the first of its kind – through design, space, location, and genuine lifestyle experiences. Surrounded by the Gulf, The Alef Residences is situated on the West Crescent of Palm Jumeirah, covering 46840 sq m, all serviced by W – The Palm. Everything is within reach, shopping, dining, even access routes as far as the airport are effortless.

Commodit?s

ID Reference Propriete

Am?nagements Ext?rieurs