


Penthouse

Panteras Colonial House

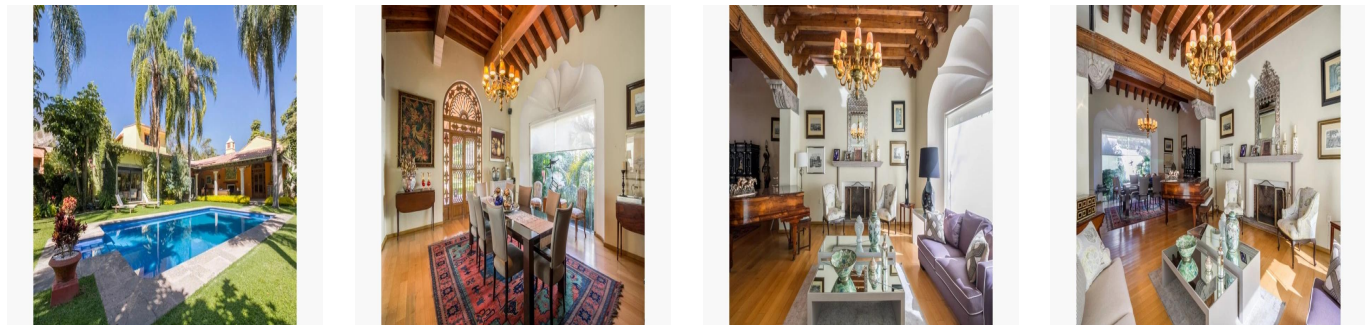
Panama, Panamá, Panamá, , 62050,

- 🏠 1273 qm
- 🛏️ 0 chambres
- 🚗 0 Exhibition results
- 🚿 0 salles de bains
- 🏠 0 planchers
- 📏 0 qm superficie du territoire
- 🚗 0 places pour voitures



Mexico Luxury Estates
Mexico Luxury Estates
Cuernavaca, Mexico - Heure locale

☎️ +52 (777)221-0421

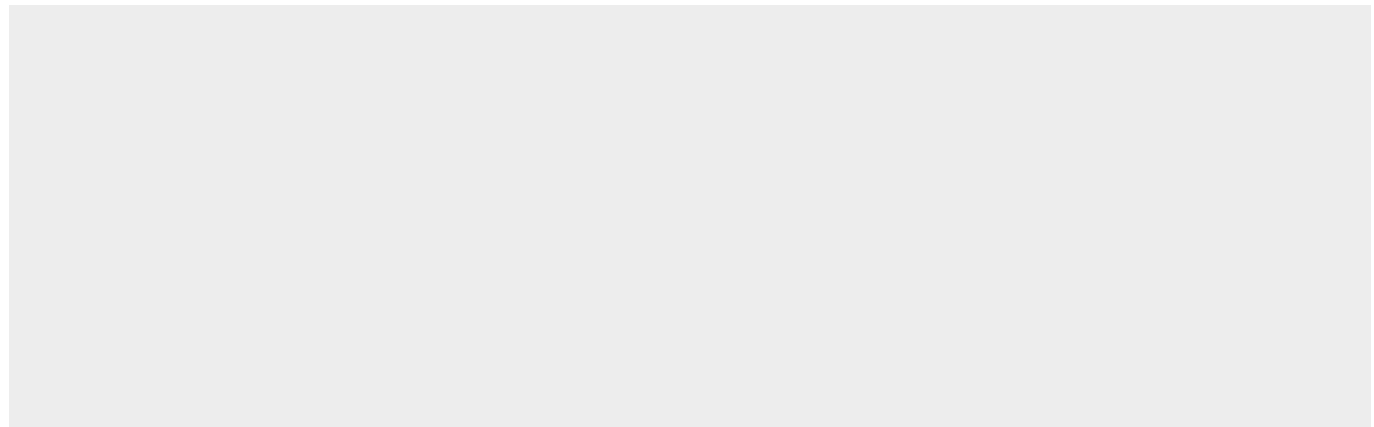


In a quiet Privada of las Palmas, Panteras House pays homage to the authentic colonial architecture. As you pass through the antique wood doors, you are greeted by a very unique entryway and double foyer. Cantera floors with a star motif, carved wood beams, simple stone pillars, modern glass doors, skylights, niches, fountain and pond feature, all complement each other. The treasure within does not disappoint as you admire this classic masterpiece in all its splendour. A sweeping loggia invites you to relax and take in the picture perfect garden and glistening pool. Refinement and elegance pervades in the sophisticated living and dining room with high ceilings, charming fireplace, impressive doors and shell motif windows, creating a superb setting for the grand piano. Adjacent is the spacious, gleaming kitchen, and a practical game's room. The main floor has the luxurious master suite with his and her marble bathrooms, large walk in closet, sitting area and several windows with wonderful views of the gardens. Continuing on that wing are two guest bedrooms and a comfortable T.V room. The second level consists of a seven seater movie room and two large guest suites with full bathrooms. This remarkable property lends itself to serve as the ideal family compound. In addition to the 5 bedroom main residence, it has 3 bungalows, a separate office, 4 multipurpose rooms, 5 service bedrooms and a private children's play garden. The possibilities are endless at the quintessential Panteras House.

Disponible Apr?s De :

27.08.2019

Le Sol : 4 Les Sols : 4 Année De Construction : 2017 Places De Voitures : 4 Année De Construction : 2017 Type: Bureau



Commodit?s

ID Reference Propriete

Am?nagements Ext?rieurs