

Penthouse

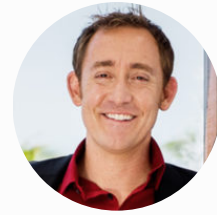
Luxurious Parkside Apartment In Costa Del Este

Philippines, Central Visayas, Cebu City, , , ,

PRIX DE VENTE

USD 400000.00

- 102 qm
- 2 chambres
- 1 Exhibition results
- 1 salles de bains
- 1 planchers
- 1 qm superficie du territoire
- 1 places pour voitures

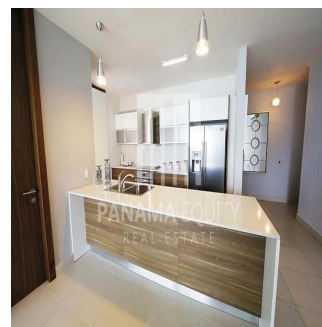
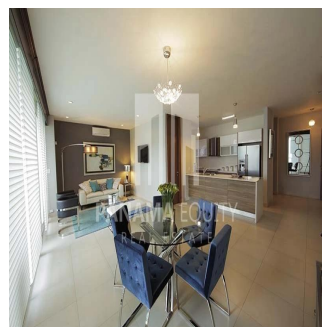


Kent Davis

Panama Equity Real Estate

Panamá, Panama - Heure locale

+507 6030-6782



Parkside is perfect for an investor: Located on the same street as many of the multinational corporations that have established their Latin American bases in Panama, there will never be a shortage of young professionals and families who are eager to be walking distance from their offices. The manicured entranceway, four high-speed elevators, and the many different amenities that can be found in Parkside's social area you'll notice immediately that everything is meticulously cared for by the on-site building administrators. Parkside was purposely constructed right next to Parque Costa del Este to guarantee the apartment's views of the park, and the surrounding city, will never be obstructed by another building. The apartment itself is brimming with natural light. This 1 bedroom 1.5 bathroom unit is exactly what the modern business professional is looking for. The open kitchen's design adds another modern touch to an already elegant apartment. The balcony is large enough to relax and unwind after a long day at the office. The master bedroom comes with an oversized walk-in closet that leads into a private bathroom. This apartment already has a long term renter occupying the unit, you'll start seeing a return on your investment from day 1. Contact: Matthew Marx Office: 320-4310 Mobile: +507 6780-3102

