

Penthouse


Prime 3-Storey Semi-Detached House Located On Woo Mon Chew

Hong Kong, L'île de Hong Kong, Moyenne-niveaux Ouest, Woo Mon Chew Rd, , ,


PRIX DE VENTE

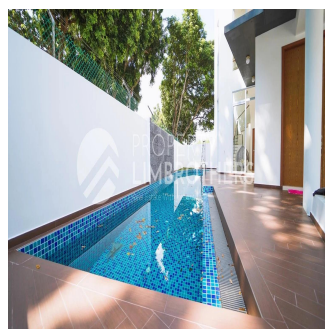
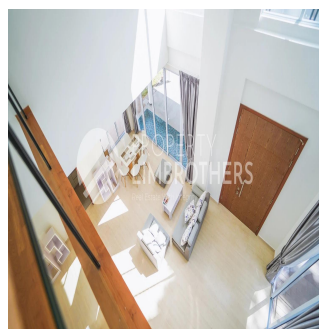
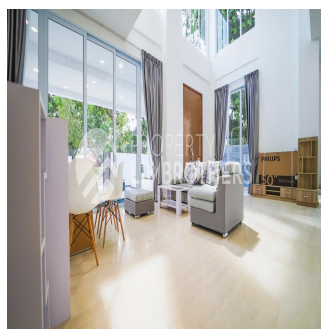
\$ 4247800.00

- 🏠 3323 qft
- 🛏 12 chambres
- 🚗 5 Exhibition results
- 🚿 7 salles de bains
- 🏗 7 planchers
- 📏 7 qft superficie du territoire
- 🚗 7 places pour voitures



Melvin Lim
Property Lim Brothers
Singapore, Singapore - Heure locale

 +65 90676710

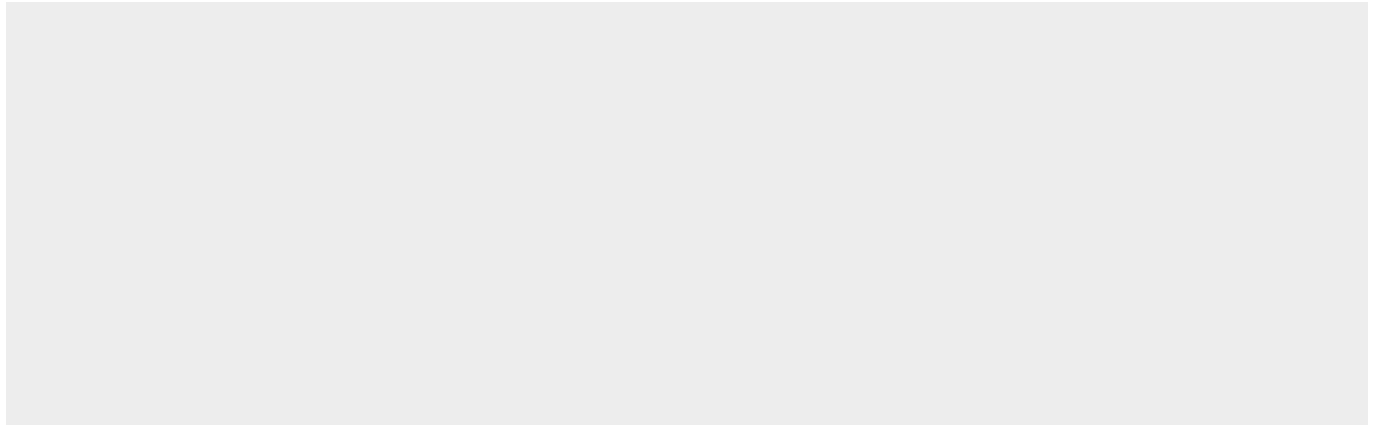


Enjoy living in the light and breeze of the East with this prime 3-storey semi-detached house located on Woo Mon Chew Road - a quaint street nestled in Siglap. This spacious property has a built-up space of 6077sqft facing the North-Northeast, and has 5 bedrooms and 7 baths. The living room features a high ceiling measuring at 6.85m from floor to ceiling and an air-well ensuring natural sunlight reaches all level of the house, giving your home a beautiful glow and great ventilation. You get a private pool on the side of the house, ready for you to unwind in whenever you need to. Adding to the essence and life of this beautiful home, you can find a pond feature in front of the living area. The master bedoom on level 2 comes with a large balcony and a bathtub in the bathroom. Fret not, the 3 en-suite bedrooms on level 3 includes their very own private balcony as well. On the attic level, the bedroom also has a bathroom, with a bathtub that comes with a jetpool feature. With a host of amenities within reach, life in this house is a dream. Getting to the city is within 10 to 15-minute drive, and reowned schools such as Victoria Junior College, Tao Nan School and Temasek Junior College are within the vicinity. Shopping malls such as Parkway Parade and Bedok Mall are also easily accessible.

Disponible Apr?s De :

05.08.2019

Le Sol : 4 Les Sols : 4 Annee De Places De Voitures : Ann?e De Construction : 2017 Type: Bureau
Construction : 2017 4



Commodit?s

ID Reference Propriete

Am?nagements Ext?rieurs