

Ático

Ground Floor Office Space For Rent In Sandton

Daisy St, 135, 2031,

PRECIO DE ALQUILER MENSUAL

\$ 10366.00

PRECIO DE VENTA

\$ 0.00

🏠 900 qm 🛏️ 0 habitaciones 🛏️ 0 dormitorios 🚿 0 baños

🏗️ 0 suelos 📏 0 qm superficie terrestre 🚗 0 plazas de coche



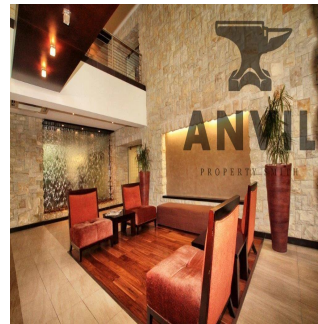
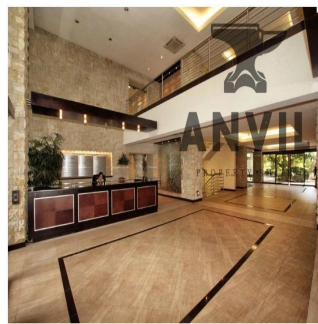
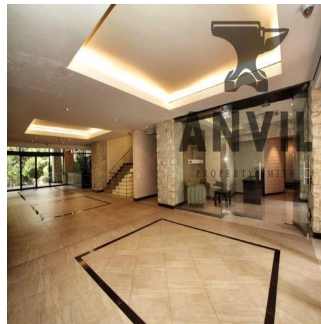
Jessica Oosthuizen

Space Online Group

Johannesburg, South Africa - Hora Local



27 72 781 1878



135 Daisy Street, Sandown in Sandton is a commercial property for blue chip tenants and it is available to lease. There is an selection of different size units available. The building has easy access to the M1 highway off Grayston Drive and is located close to Sandton CBD and the Gautrain station. There is 24 hour security with finger print access control to office units. There are open visitor parking's and underground tenant parking. Well maintained gardens wraparound the periphery of the building. Water features in the reception create a relaxed environment.

Disponible En: 14.06.2019

Piso: 4 Suelos: 4 Año De Construcción: 2017 Plazas Para Coches: 4 Tipo Oficina



Servicios

ID ID propiedad

Servicios Exteriores

Seguridad las 24 horas