

Ático

Mansion 1 - The Alef Residences

Sudáfrica, Gauteng, Germiston, , ,

PRECIO DE VENTA

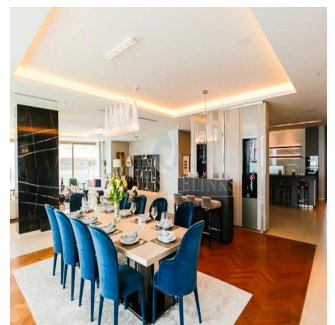
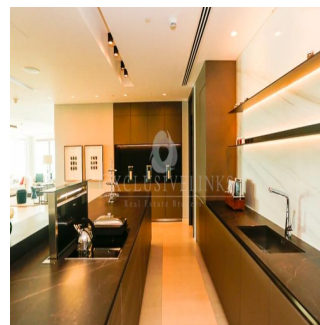
USD 70000000.00

- 13894 qft
- habitaciones
- 4 dormitorios
- 6 baños
- 6 suelos
- 6 qft superficie terrestre
- 6 plazas de coche



Jcm Bienes Ra?ces
 Jcm Bienes Ra?ces
 Naucalpan de Juárez, Mexico - Hora Local

+52 55 8421 5859



Henry Wiltshire International is please to present to the market Alef Residences a very unique development, with a total of 104 homes spread out over 8 different mansions with each mansion having its own private lobby and 2 elevators servicing a maximum of only 14 apartments with just 2 apartments per floor. The Alef Residences will be serviced by the five star W Hotel Palm Jumeirah that we are building right next door, owners of the Alef Residences will receive VIP access and treatment to all of the amenities in the W Hotel including also room service and housekeeping if required. The W Hotel will have 5 restaurants, 4 bars, 4 swimming pools, roof top sunset bar, gym, spa and VIP rooms that will all be available to the owners of The Henry Wiltshire International Alef Residences on Palm.

Disponible En: 01.01.1970

Piso: 4 Suelos: 4 Ano De Construcción: 2017 Plazas Para Coches: 6 Año De Construcción: 2017 Tipo Oficina



Servicios

ID ID propiedad

Servicios Exteriores