

Ático

# Apartment In La Vista Santa Maria Golf

Singapur, Singapur, Singapur, , , ,

PRECIO DE VENTA

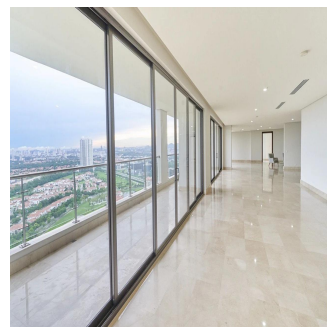
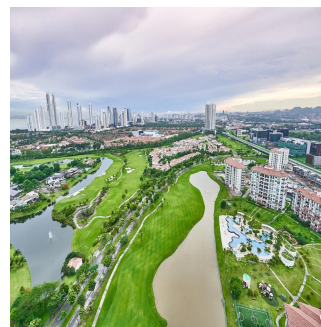
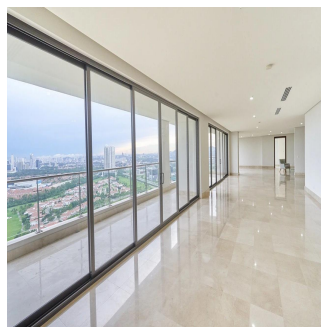
**USD 2150000.00**

- 600 qm
- 6 habitaciones
- 3 dormitorios
- 3 baños
- 3 suelos
- 3 qm superficie terrestre
- 3 plazas de coche



**Javier Sierra**  
Ivan Sierra Inversiones  
Panamá, Panama - Hora Local

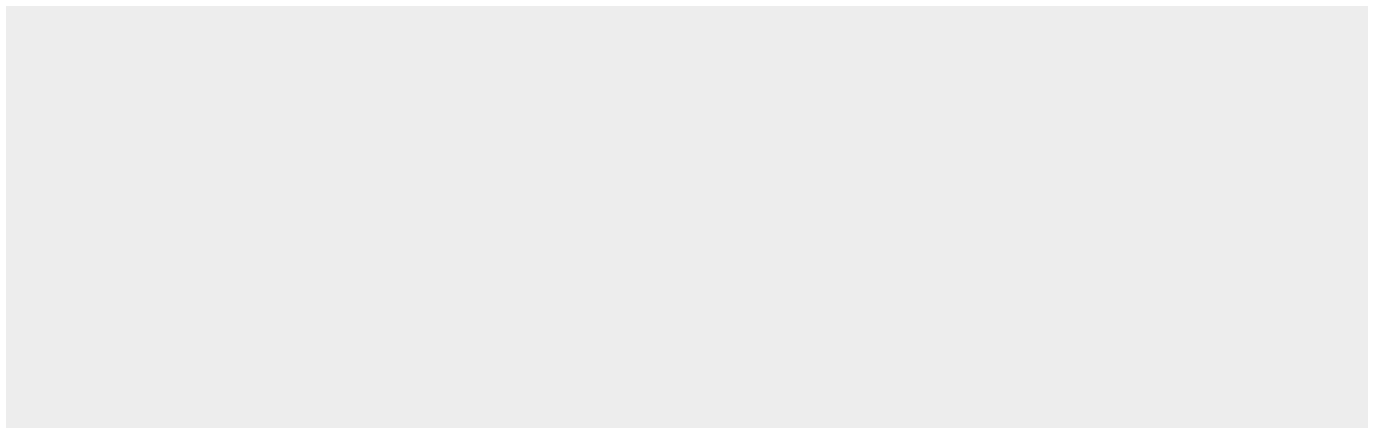
+507 236-8353



A luxurious tower of 30 floors of residential apartments located in Santa María Golf & Country Club, one of the most exclusive projects in Panama, minutes from Costa del Este. La Vista on the Green is a luxury building with family apartments of impeccable finishes. With a privileged location and beautiful views of the golf course designed by Nicklaus Design, residents of Santa María Golf & Country Club can enjoy quick and easy access to Costa del Este, the city center, the best banking area, exclusive areas of shops and direct access to Tocumen International airport. Santa María is a luxury residential complex where modernity is combined with greenery, creating an incomparable lifestyle. The Santa Maria, a Luxury Collection Hotel & Golf Resort is a five-star urban resort that offers exceptional experiences to the most knowledgeable travelers who are looking for a true connection with the destination. The hotel has 182 luxury rooms and suites with Panamanian design elements. Surrounded by the extraordinary view of the professional golf course, designed by Nicklaus Design, the resort has three restaurants, an avant-garde spa, a gym with rejuvenating natural light, an outdoor pool overlooking the golf course and exceptional spaces for Events and meetings Our exclusive apartment is different from everyone in the building as it is a full 600 m2 flat with a large balcony that encourages you to relax with the beautiful views of the city's skyscrapers, the Pacific Ocean and the greenery of the golf course . Of course the best finishes that can be offered in marble floors, kitchen with island, marble envelopes in kitchen and bathrooms, excellent imported faucets and solid doors throughout the apartment. The building has all the amenities for the enjoyment of your family and loved ones.

Disponible En: 20.08.2019

Piso: 4      Suelos: 4      Año De Construcción: 2017      Plazas Para Coches: 4      Año De Construcción: 2017      Tipo Oficina



Santa Maria Golf & Country Club Island Panama, Panama

## Servicios

ID      ID propiedad

## Servicios Exteriores