








Ático


# Penthouse In Santa Maria Golf

Calle 125 Este, , ,


PRECIO DE VENTA

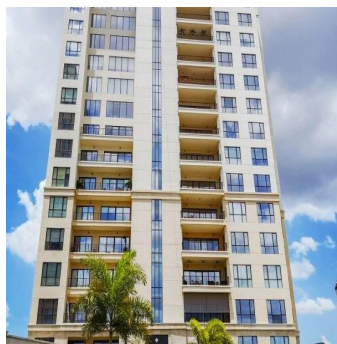
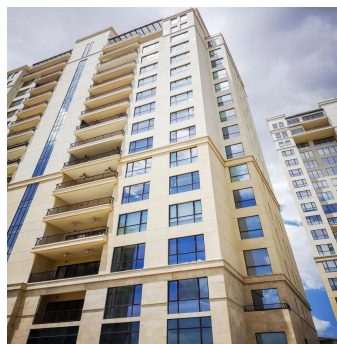
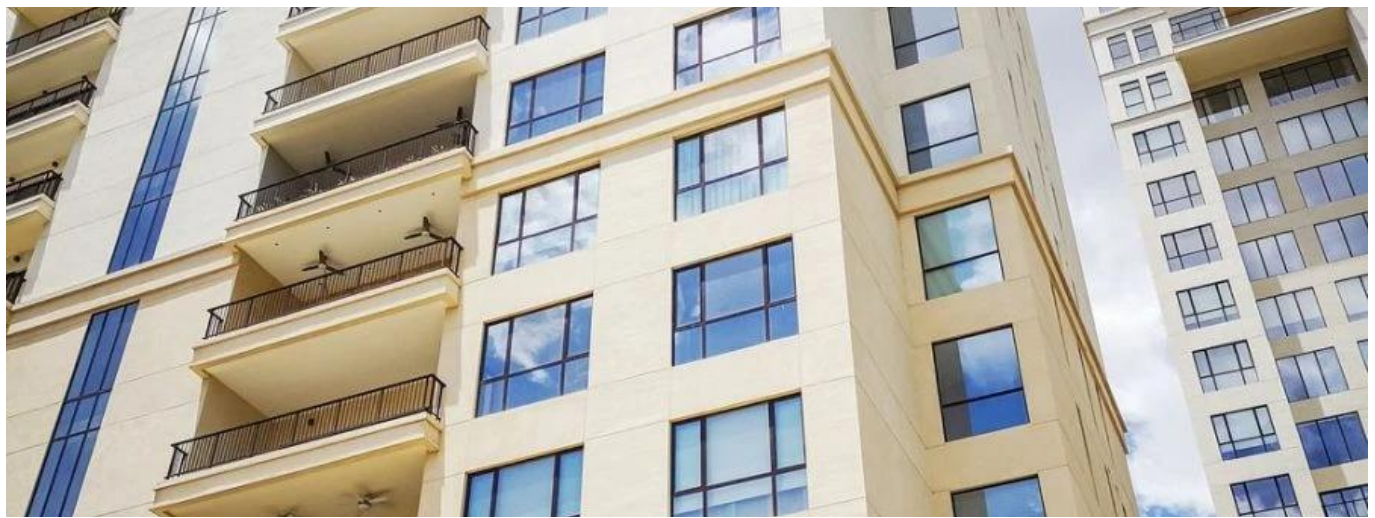
**\$ 3750000.00**

-  1277 qm
-  10 habitaciones
-  5 dormitorios
-  5 baños
-  5 suelos
-  5 qm superficie terrestre
-  5 plazas de coche



**Javier Sierra**  
Ivan Sierra Inversiones  
Panamá, Panama - Hora Local

 **+507 236-8353**



Santa Maria Court has been conceived with a level of detail for the most demanding client and always having in mind to raise the quality of construction and projects in Panama taking them to world class levels. The social areas in the apartments in Santa Maria Court have a greater proportion than those of apartments in the square with similar size. And it is that in order to accommodate all the memories and physical possessions that accumulate over the years, more generous spaces are necessary. **KNOW THE PROJECT** ° 2 buildings: West & East Tower ° 16 and 17 floors ° 2 apartments per floor with a 2 bedroom apartment (from 226 m<sup>2</sup>) and another 3 bedroom apartment (379 m<sup>2</sup>) and 2 penthouses (one of 1 level - from 696 m<sup>2</sup> and another of 2 levels - from 980 m<sup>2</sup>) ° A basement for parking lots and with deposits available for sale and entrances to the elevators with good finishes. ° 2 high speed elevators plus service elevator. ° Common garage door with optional valet parking ° Large lobbies in each tower ° Offices or offices available for sale ° Additional deposits with humidity control for sale ° Event room with A / C. ° Fully equipped gym ° Steam room and shower (his & her) ° Swimming pools ° Children's park ° Tennis court ° Trash can x floor. ° Optional hotel service (cleaning and room service) ° Each unit is equipped with white line and central air conditioning (Stove, Built-in oven, Microwave with Fridge and freezer, Dishwasher)

