

Penthouse

Impressive 4 Bedroom Family House For Rent In Hyde Park








Maldives, Soneva Jani, Hangnaameedhoo, 2nd Rd , 2196,

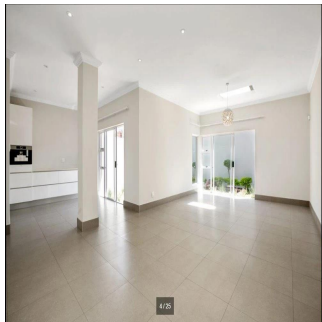
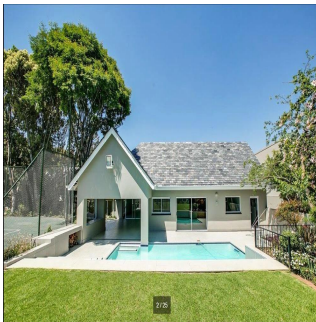
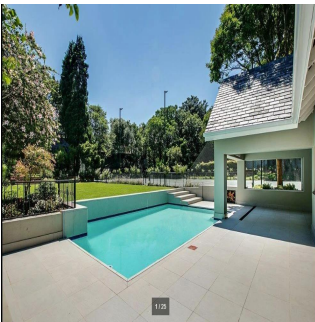
MONTHLY RENTAL PRICE

\$ 5466.00

SALES PRICE

\$ 0.00

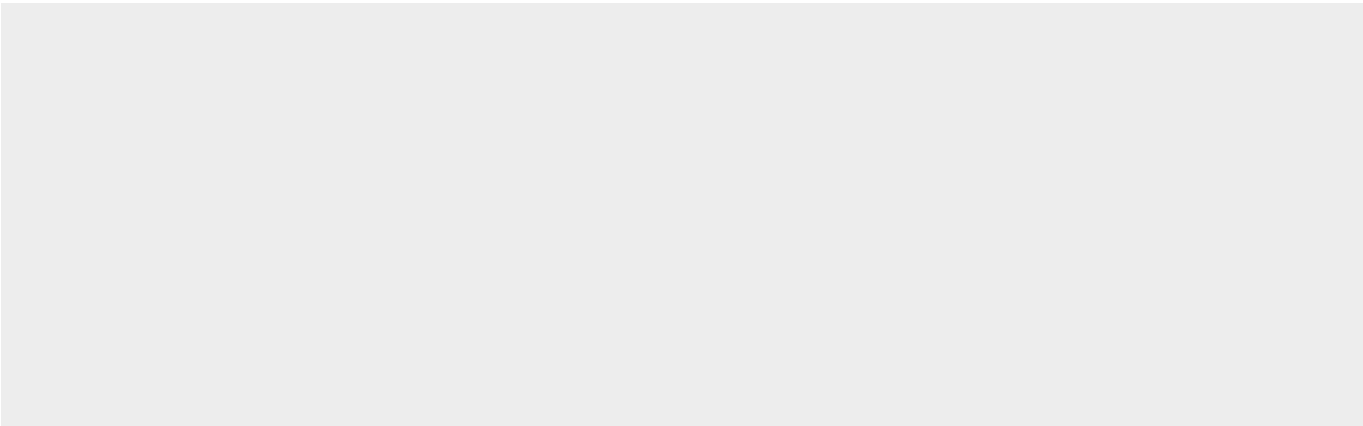
-  870 qm
-  9 rooms
-  4 bedrooms
-  5 bathrooms
-  5 floors
-  5 qm land area
-  5 car spaces



IMPRESSIVE 4 BEDROOM FAMILY HOME Flawless design with a neutral colour palette this single storey spectacular family home offers a setting with vistas of trees and stunning landscaped garden and water features. Clean lines characterize the modern fluidity allowing easy comfortable indoor/outdoor entertaining with bar on an extensive covered patio to sparkling pool and tennis court. Modern open plan kitchen and separate scullery and pantry with top quality finishes, central island, built-in coffee machine, integrated fridge/freezer and walk in fridge. 4 bedrooms are on the east wing with sliding doors opening to the garden. The master suite has a full bathroom, double shower and walking in dressing room. Security comprises of state of the art alarm system connected to mobile devices, CCTV, high perimeter walls with electric fencing, beams and double electric gates. Double automated garage, double carport and staff accommodation. The property also has a separate complete 2 bed cottage with separate entrance. Positioned on a large stand to maximize building this property presents a rare opportunity to realize one's own trophy home. In close proximity to Hyde Park Shopping Centre and available immediately!

Available From: 28.05.2019

Floor: 4 Floors: 4 Year Built: 2017 Car Spaces: 4 Year Of Construction: 2017 Type: Office



Amenities

ID	Property ID	Air Conditioning	Alarm System
Cctv	Fire Sprinkler System		

Outdoor Amenities

24 Hour Security	Balcony	Fully Fenced	Garage
Landscaped Garden	Swimming Pool	Tennis Court	