

Penthouse

Dual Living 6 Bedroom House For Sale In Chapman Peak

South Africa, Western Cape, Cape Town, Sleepy Hollow Ln, 26, 7979,

SALES PRICE

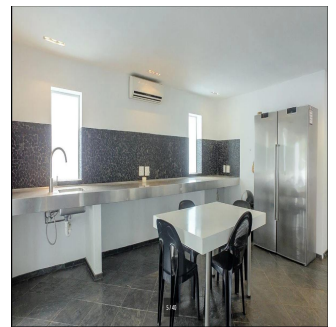
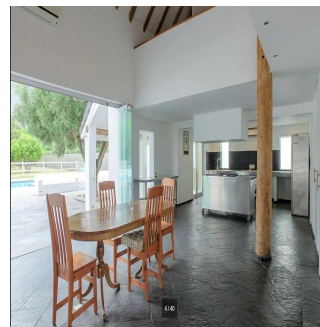
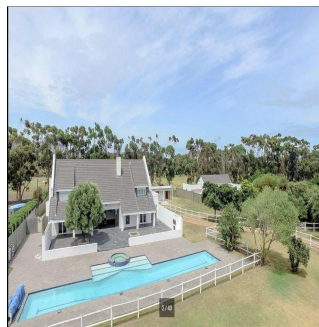
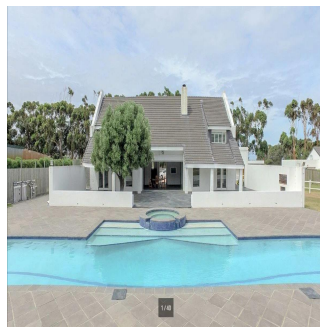
\$ 814300.00

530 qm 10 rooms 6 bedrooms 4 bathrooms

4 floors 4 qm land area 4 car spaces

Samuel Ikioghaye

, - Local Time



Dual-Living Equestrian Estate Set in a quiet cul-de-sac down sought-after Sleepy Hollow Lane is this ideal equestrian property, with paddock, 2 stables and feed room. The North-facing main house is of grand proportions, entering into the open plan double volume dining / entertaining area with frameless glass doors allowing easy indoor / outdoor flow to patio, 25 x 4m lap pool and Jacuzzi. All three bedrooms are upstairs, the main bedroom is a sight to behold with large walk-in wardrobe, en-suite bathroom and private balcony with gorgeous mountain and country views The private second dwelling is a house all on its own! With 3 bedrooms (mes), open plan living areas, kitchen with large scullery and double garage. Both properties are fully air-conditioned and feature state-of-the-art security, including CCTV, beams and electric fencing.

Available From: 24.05.2019

Floor: 4 Floors: 4 Year Built: 2017 Car Spaces: 4 Year Of Construction: 2017 Type: Office



Noordhoek Area information: Situated at the foot of Chapman's Peak the Noordhoek valley remains one of the Cape Town's most treasured destinations. Although rural in location and atmosphere, is nevertheless only a 40 minutes drive from Cape Town international Airport. It is close to Cape Point, Kalk Bay/St James, Simon's Town naval base, Fish Hoek and all the tourist attractions. With its delightful village atmosphere, offering rural and rustic surroundings, along with views of the vast wetlands, beautiful mountains; and the ocean, it's the place to live. The name "Noordhoek" means north corner in Dutch and is best known for its picturesque shoreline which stretches from the southern foot of Chapman's Peak to Kommetjie. From here one can watch the surfers riding the waves or take a long sunset horseback ride along the beach. Noordhoek can be accessed either from Chapman's Peak Drive which leads out of Hout Bay or via Ou Kaapse Weg which cuts through the Silvermine Nature reserve – now part of the Table Mountain National Park. The Noordhoek way of life has a real rural feel, with leafy lanes and the beautiful Noordhoek common, and allows equestrian lovers to ride to the beach over the dunes. Noordhoek remains very popular - as it is "Close to nature, but close to Town"

Amenities

ID	Property ID	Air Conditioning	Alarm System
Balcony	Cctv	Jacuzzi	

Outdoor Amenities

24 Hour Security	Carport	Garage	Landscaped Garden
Swimming Pool			