

Penthouse


Big Blue

South Africa, Gauteng, Lethabong, , , 29620,

SALES PRICE

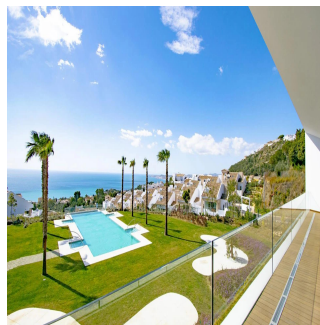
EUR 575000.00

- qm
- rooms
- bedrooms
- bathrooms
- floors
- qm land area
- car spaces



Guido Szelinsky
Sempure
Berlin, Deutschland - Local Time

49 1739940824



Introducing Big Blue - a new project of luxury townhomes in the hills of Torremuelle above Benalmádena. The location affords owners amazing panoramic views to the sea as well as the mountains. It's location also provides easy access to the highway, and is close to 15 minutes from Malaga airport, and around 20 minutes from Marbella. The properties have usable space of 256m² distributed across three levels. The upper floor is where you will find the spacious master bedroom suite with walk-in wardrobes, an ensuite bathroom and access to a private terrace. The middle floor consists of a kitchenette, and a guest bedroom with an ensuite bathroom, as well as another guest toilet. On the ground floor is 40m² of living room and two further bedrooms, one of which is ensuite, and another bedroom, as well as access to your private garden. The project also includes an exclusive "Owners Club"; a social club with large infinity pool, as well as a nice garden area from where you can truly appreciate the sea views. You have the option of installing an elevator in the property and the price includes a storage room and private parking space.

Available From: 17.05.2019

Floor: 4 Floors: 4 Year Built: 2017 Car Spaces: 4 Year Of Construction: 2017 Type: Office



Amenities

ID Property ID

Outdoor Amenities