

Penthouse

Luxurious 2 Bedroom Apartment Flat To Rent In Waterfall

South Africa, Gauteng, Sandton, Waterfall Drive, , 2090,

MONTHLY RENTAL PRICE

ZAR 16000.00

- 🏠 115 qm
- 🏠 4 rooms
- 🛏️ 2 bedrooms
- 🚿 2 bathrooms
- 🏠 2 floors
- 📏 2 qm land area
- 🚗 2 car spaces



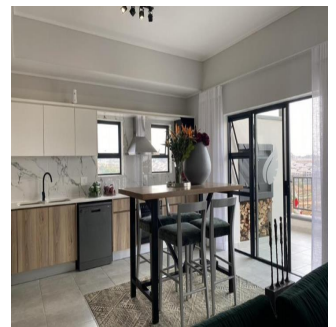
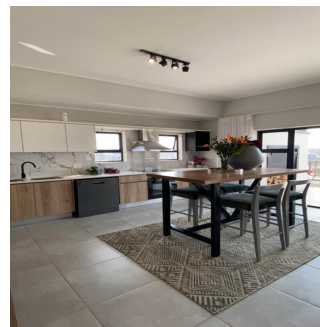
Nazia Shah

Infinity Realty Group

Sandton, South Africa - Local Time



27 82 599 0744



Luxury Beach Living in Waterfall City with Flexible Deposit Terms! Secure your dream penthouse with a deposit of just 1.5 months' rent, payable over two months, and experience the ultimate in luxury beach living in the heart of Waterfall City.

The apartment features two private balconies, each offering serene views of the river that runs behind the complex and the vibrant lifestyle centre. Be the first to inhabit this stunning space, where spacious dining and living areas provide breathtaking vistas, making every moment a picturesque experience.

This exclusive penthouse apartment offers unparalleled views of a crystal-clear lagoon, expansive enough to cover the area of seven rugby fields, bringing the beach right to your doorstep in Johannesburg.

Apartment Features:

- * DEFY Electric Oven
- * DEFY Hob with Extractor
- * DEFY Refrigerator
- * DEFY Washing Machine
- * DEFY Dishwasher
- * Fibre & DSTV Ready
- * Tiled Floors
- * Aluminium Windows
- * Covered Patio / Balcony
- * Generator Backup Power

Exclusive Estate Amenities:

- * Crystal-clear lagoon
- * Amici Restaurant & Pizzeria
- * Coffee area
- * Convenience store
- * Meeting room
- * Cinema room
- * Function room
- * Camelot Wellness Spa
- * Laundromat
- * Car wash
- * Canoes
- * Paddle boards
- * Floating obstacle course
- * Squash facilities and mini sports field
- * Vitality-approved Training Science Gym with a trainer
- * Cozy lounge areas with fireplaces
- * Swimming pool
- * Aquatic centre with heated and cold pools
- * Paddle courts and mini sports field (coming soon)
- * Fibre and DSTV ready, prepaid utilities
- * Modern lifestyle centre

Unmatched Security & Convenience:

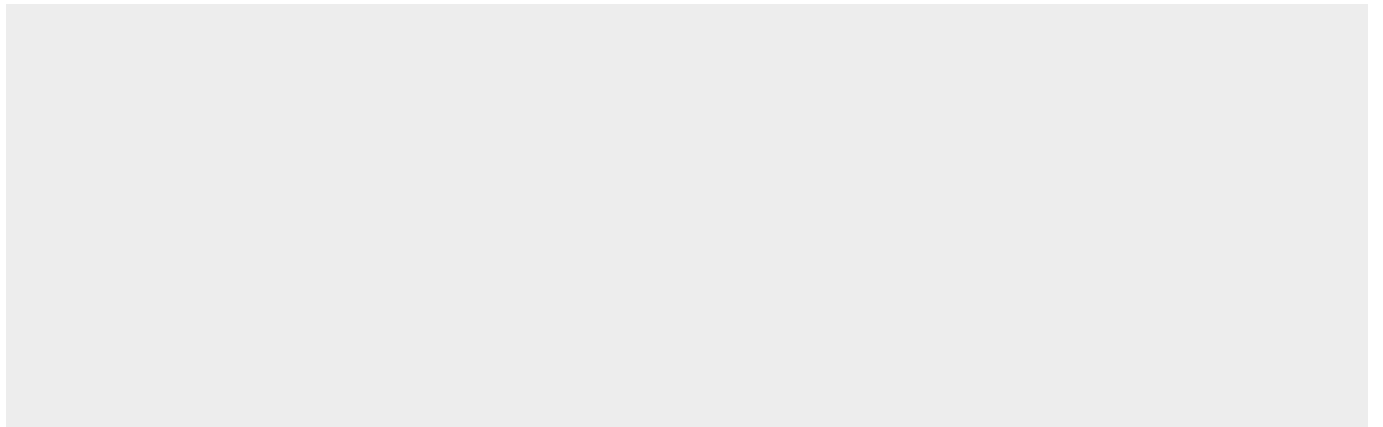
- * 24-hour security with biometric access ensures your safety and peace of mind.
- * Ideally located near Waterfall Mall, the Gautrain station, and the Gautrain bus route.
- * Easy access to Pretoria, Midrand, Woodmead, Sandton, and major highways (N1 and N3) for seamless commuting. Live in luxury with flexible deposit terms and experience the best of beach living in the city.

Don't miss the chance to make this exclusive penthouse your new home. Contact us today to schedule a viewing!

WhatsApp or Call for more information!

Available From: 17.09.2024

Floor: 4 Floors: 4 Year Built: 2017 Car Spaces: 4 Year Of Construction: 2017 Type: Office



Amenities

ID Property ID Air Conditioning Lounge

Outdoor Amenities

24 Hour Security Garden Secure Parking Swimming Pool