

Penthouse

Beautiful 4 Bedroom House For Sale In Waterfall Country Estate

, , 2090,

SALES PRICE

ZAR 9599000.00

1069 qm 8 rooms 4 bedrooms 4 bathrooms

4 floors 4 qm land area 4 car spaces



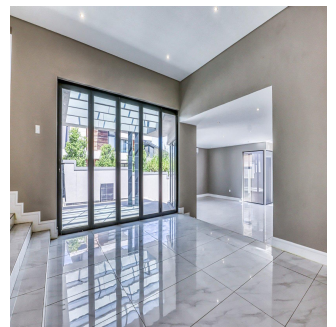
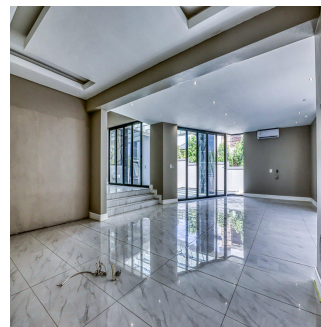
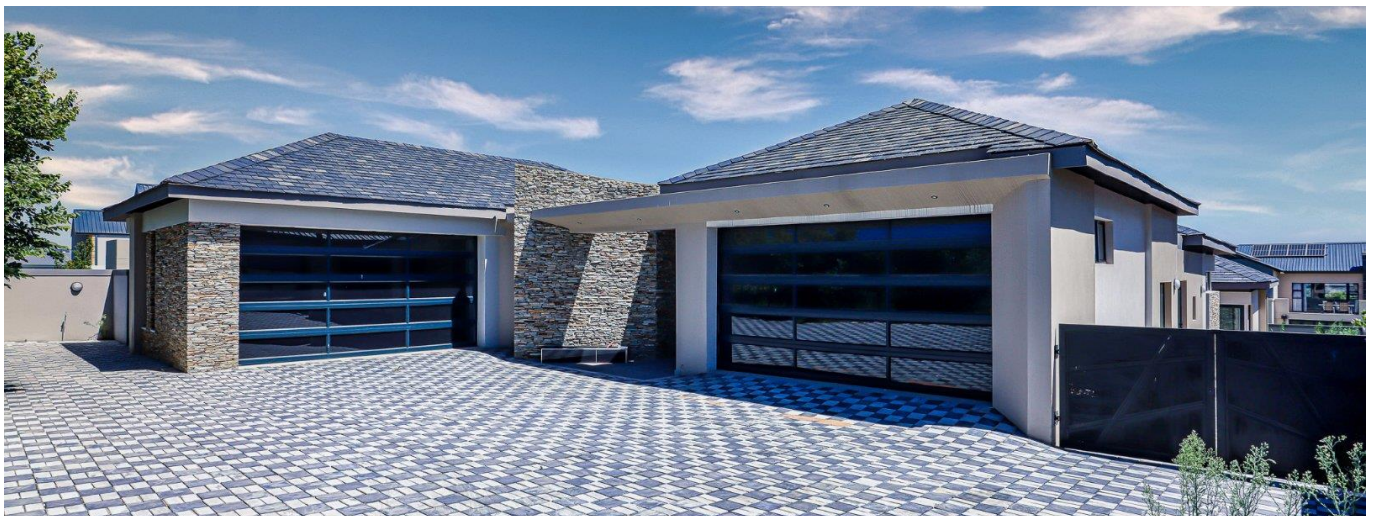
Nazia Shah

Infinity Realty Group

Sandton, South Africa - Local Time



27 82 599 0744



Nestled in a pristine valley, between Woodmead and Kyalami, lies one of the greatest lifestyle estates to enter the South African property market. Financial Mail referred to Waterfall City as the biggest property development in South African history.

Within its gradual slopes, flows the ever meandering Jukskei River, showcasing some of the most magnificent indigenous flora on the embankments. The riverside is characterized by various ecologies such as rock pools, beach areas, marshlands and, of course, a variety of different waterfalls.

Residents' quality of life is enhanced by means of facilities such as private schools, international hotel and conference venue, indigenous landscaping and parklands, trim tracks and walking trails, fishing dams and majestic lake, exclusive country clubhouse and large residential stand.

This spectacularly designed gracious single-story home in Waterfall Country Estate is complete with four bedrooms, four bathrooms, and large open living spaces filled with natural light.

The design emulates luxury and grandeur, with glass and marble finishes beneath high ceilings and divine sun-filled spaces. This brand-new home comes with the opportunity for the new owner to choose their own finishing touches – personalizing this beautiful space.

The open-plan living area comprises the kitchen, lounge, and dining area, which flow seamlessly to the entertainment patio, which is surrounded by large stackable glass doors. Upon entering this masterpiece home in an elevated foyer, light and space fill the senses, and ease of mind comforts the senses in luxurious surroundings.

Designed with space in mind, the bedrooms are sizeably grand with ample cupboard space and are complete with high-end spacious bathrooms. The master suite has its own private lounge with a walk-in dressing room as well as a gorgeous en-suite and is flooded with natural light coming in from large floor-to-ceiling windows.

A large driveway and staff accommodation complete the property, offering a beautiful wrap-around garden space. This is the perfect designer home for anyone who values taste, space, and uncompromised luxury.

Waterfall Country Estate is synonymous with a lifestyle of convenience and natural beauty, with bike and hiking trails, fishing dams, picnic spots, and play parks for the kids. In addition, 24-hour security and access control ensure residents' safety and peace of mind.

Amenities include the nearby Mall of Africa with a multitude of restaurants and high-end retailers, as well as the convenience of close proximity to Waterfall Netcare Hospital, a variety of fast food outlets, and nearby to both the Allandale and Woodmead arterial routes.

Book a viewing today with your agent – this property won't be on the market for long!

2 access-control gatehouses

37km of walking and biking trails

vast communal parks

5ha lake for non-motorized water sports

Waterfall Country Village Clubhou

sea double-story gym

heated lap pool

climbing wall

tennis courts

restaurant

children's play area

Contact me now to View!

Available From: 19.08.2024

Floor: 4 Floors: 4 Year Built: 2017 Car Spaces: 4 Year Of Construction: 2017 Type: Office



Amenities

ID	Property ID	Air Conditioning	Ensuite
Maids Room	Study Room		

Outdoor Amenities

24 Hour Security	Garage	Garden	Swimming Pool
------------------	--------	--------	---------------