

Penthouse


Ideal Industrial Property In Spartan To Rent


, , 1619,

MONTHLY RENTAL PRICE


ZAR 20300.00

 350 qm


 rooms

 bedrooms

 bathrooms

 floors

 qm land area

 car spaces

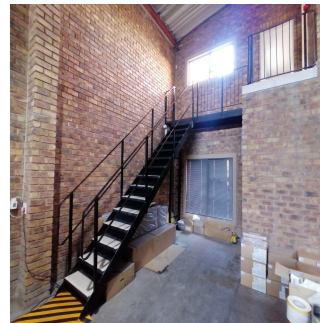
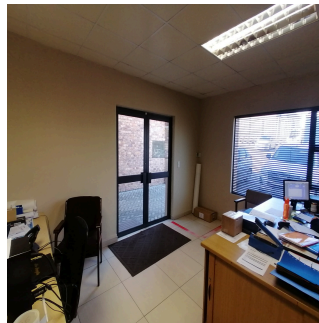


Anel Delpont

Remax One Kramerville
Sandton, South Africa - Local Time



27 11 615 4911



Warehouse and offices available TO LET. Neat well managed mini factory park. Park is secure with access control and perimeter electric fence. Close to Sebenza and Spartan this sought after industrial node is ideally located on the East Rand.

The warehouse has good height and natural light. 3phase power is available with 60amps provided. One roller shutter door accessing the warehouse with large paved yard allowing for truck access.

There is ample staff and visitors parking. The double volume office block has reception, meeting rooms and boardroom. Male and female toilets with a small kitchenette.

Additional mezzanine floor in the warehouse area.

Close to all amenities, easy access to the R24,R21 and N3 highways.

10mins from O R Tambo International Airport.

Available From: 31.07.2024

Floor: 4 Floors: 4 Year Built: 2017 Car Spaces: 4 Year Of Construction: 2017 Type: Office



Amenities

ID Property ID

Outdoor Amenities

Secure Parking