

Penthouse

Aaa Grade Warehouse For Rent In Longlake

Longlake Boulevard, , ,

MONTHLY RENTAL PRICE

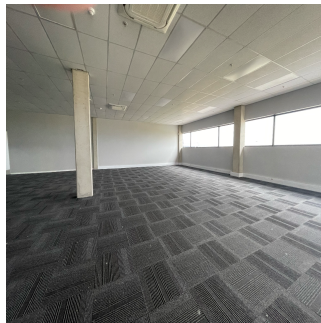
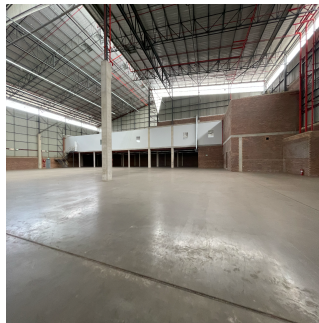
ZAR 878004.00

- 10092 qm
- rooms
- bedrooms
- bathrooms
- floors
- qm land area
- car spaces



Anel Delpoit
Remax One Kramerville
Sandton, South Africa - Local Time

27 11 615 4911



This building, which is 10,092m², is a big one with lots of different features and comforts. The warehouse itself covers 10,092 square meters GLA, which is a lot of room for distribution work.

In addition, there is a separate 1,000m² office space that can be used for administrative tasks and other office-related tasks.

The warehouse has a generous eaves height of 12 meters, which makes it easy to stack tall things or add mezzanine levels.

The land has a large yard that can be used for a variety of outdoor activities, such as parking, loading, or moving vehicles and equipment.

The warehouse features LED lighting.

Please get in touch with me today to view!

Available From: 17.07.2024

Floor: 4 Floors: 4 Year Built: 2017 Car Spaces: 4 Year Of Construction: 2017 Type: Office



Amenities

ID Property ID

Outdoor Amenities

Parking Lot Secure Parking