

Penthouse

# Prime Industrial Property For Sale In Meadowbrook

Lascelles Road, 2, 1609,

MONTHLY RENTAL PRICE

**ZAR 1398936.00**

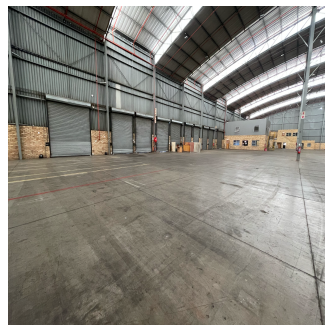
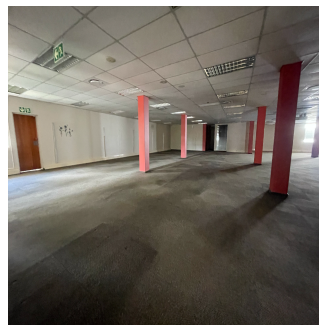
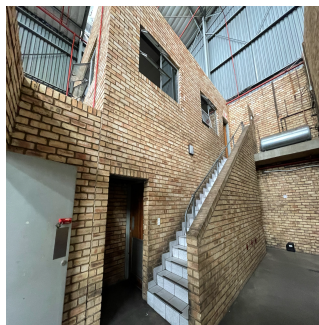
- 16654 qm
- rooms
- bedrooms
- bathrooms
- floors
- qm land area
- car spaces



**Anel Delpoit**

Remax One Kramerville  
Sandton, South Africa - Local Time

27 11 615 4911



The warehouse building covers 16,654m2 and is right next to the busy main highway. It's a great place for businesses to move their inventory.

With an area of 37,316m2, the stand is very large and can be used for a wide range of industry or commercial activities.

Additionally, the yard is a large 7,527m2, so there is plenty of room for loading, unloading, and moving of goods, which makes logistical tasks easier.

Its strategic position makes it easier to see and get to, which makes it a great hub for businesses that want to get the most exposure and ease of use. Located so that it has easy highway access to the well-known R24. The height is great, measuring 13 meters.

This warehouse building has a lot of great features, like 28 roller shutter doors that are placed in a way that makes it easy for goods to come in and go out.

Seven dock levellers make sure that loading and unloading go smoothly, and three on-grade doors make it easier for different types of cars to get in and out. With a strong 750-amp power source, the property can handle a lot of different industrial tasks, from making things to distributing them.

The building has a lot of access points and a lot of power outlets, making it perfect for businesses that want to be as useful and productive as possible.

Please get in touch with me today to view!

Available From: 17.07.2024

Floor: 4    Floors: 4    Year Built: 2017    Car Spaces: 4    Year Of Construction: 2017    Type: Office



### Amenities

ID                                  Property ID

### Outdoor Amenities

Parking Lot                          Secure Parking