

Penthouse


The Ideal Commercial Property For Sale In Midridge Park


, , 1685,


SALES PRICE


ZAR 8800000.00

 711 qm


 rooms

 bedrooms

 bathrooms

 floors

 qm land area

 car spaces

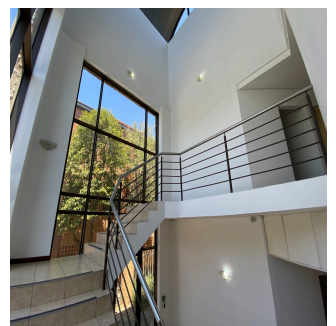
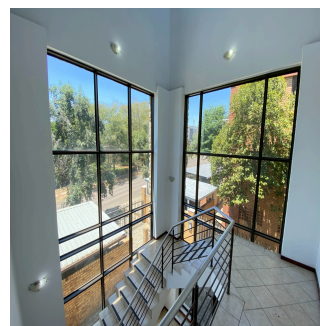


Anel Delport

Remax One Kramerville
Sandton, South Africa - Local Time



27 11 615 4911



The offices are in great shape and are ready to be used. They are mostly open plan, with a boardroom or meeting room and three to four private offices on each floor.

The office is well-lit and a nice place to work thanks to the many balconies and big windows. On each floor of the building, there are bathrooms and a tea kitchen.

There is also parking in the basement and generator power (along with a UPS for continuous power supply).

They are 635 square meters in size, with an extra 75 square meters of storage space in the basement.

There are 25 parking spaces, with 12 in the basement, 3 covered, and 10 open.

Please call REMAX to see this office building for sale and other choices in the park and nearby.

Available From: 06.07.2024

Floor: 4 Floors: 4 Year Built: 2017 Car Spaces: 4 Year Of Construction: 2017 Type: Office



Amenities

ID Property ID

Outdoor Amenities