


Penthouse


Premium Commercial Property In Sandton Central For Sale

Central Avenue, , 2196,


SALES PRICE


R 9440000.00

 355 qm


 rooms

 bedrooms

 bathrooms

 floors

 qm land area

 car spaces

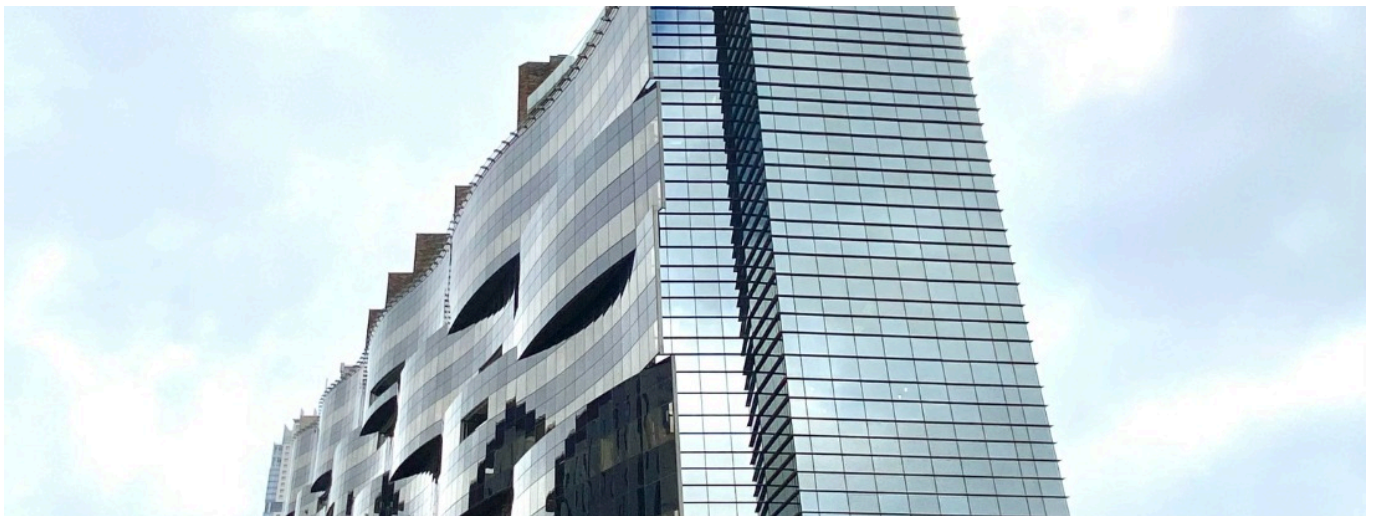


Anel Delpoit

Remax One Kramerville
Sandton, South Africa - Local Time



27 11 615 4911



EXISTING OFFICE LAYOUT Premises are fitted to a high standard and in excellent condition with: Reception Area, Meeting Room, Boardroom, Private Offices with Glass Panels, Open Plan Office Area, Own Kitchen in Unit, Private Corner Balcony, 12 Basement Parking Bays included.

Prime address located at the corner of Katherine and West. The office tower is a modern energy efficient building.

The building is secure with security posted at all entrances, booked access, license card identification system.

The property features residential penthouses on the roof of the building and is located opposite the Sandton Gautrain Station, a short walk to The Marc Offices and retail.

MORE OPTIONS and sizes available, kindly contact Craig at REMAX for more office purchase options in Sandton.

