

Penthouse

# Upmarket 2 Bedroom Apartment For Sale In Sandhurst

, , 2196,

SALES PRICE

**USD 543655.23**

🏠 163 qm

🏠 4 rooms

🛏 2 bedrooms

🚿 2 bathrooms

🏠 2 floors

📏 2 qm land area

🚗 2 car spaces

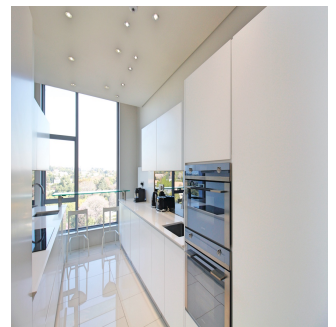
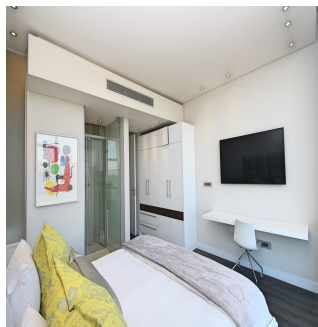


**Anel Delpoit**

Remax One Kramerville  
Sandton, South Africa - Local Time



27 11 615 4911



"EMBASSY TOWERS"

- 2 bed 2,5 bath, offers everything that modern, discerning homebuyers desire regardless of their style, age, or interests. Blending in harmony with the environment it is designed to optimize land potential, balancing construction areas with tranquil green spaces. This iconic landmark is based in a well-known area in Gauteng - Sandton and is the main business hub.

It is within walking distance to:

- "Sandton City"/"Nelson Mandela Square", a world-class shopping destination, with over 300 retailers
- Major companies: "Absa"; "Discovery", "China Bank"...
- "Benmore Shopping Center"
- "Morningside Hospital"
- 10 minutes to "Mediclinic Sandton" ( one of the biggest Hospitals in Gauteng, operating 24-hour emergency services)
- Under 35 min drive to/from "O.R Tambo International Airport" Extremely popular, trendy properties in Sandton deliver high return on investment ( even despite the current economic climate).

To maximize your investment, this upmarket residential development, offers interior designer furniture-with extra cost. The "Embassy Towers" consists of local generators for all exclusive private residents.

The sophisticated Apartment

- 163 square meters floor size
- 2 bedrooms; 2,5 bathrooms (2 en-suite) will provide access to a selection of bespoke services such as:

FACILITIES:

- 24/7 Concierge
- "Olives and Plates" (Fully operated restaurant, coffee shop, and bar)
- "The Embassy Club Prive" (Private dining and meeting room)
- "Diplomat Fitness Centre" (Fully equipped state-of-the-art gym)
- "Consulate Office Suites" (Shared corporate space)
- "Life Day Spa"
- Tennis Court-25 m length Pool

FINISHES:

- Kitchen Appliances by Smeg
- Top Quality Sanitary ware
- Superior Floor and Wall Finishes

SECURITY:

- Biometric access control at the gate to the Apartments
- Biometric access control into the basement and parking area
- Biometric access to the elevator
- Biometric access into Apartments along with conventional locks

IF YOU ARE LOOKING FOR LUXURY, EXCLUSIVITY AND ABOVE ALL, QUALITY-LOOK NO FURTHER!

.....VIEWINGS BY APPOINTMENT ONLY.....

Available From: 05.07.2024

Floor: 4      Floors: 4      Year Built: 2017      Car Spaces: 4      Year Of Construction: 2017      Type: Office



## Amenities

ID	Property ID	Ensuite	Lounge
----	-------------	---------	--------

## Outdoor Amenities

Secure Parking