

Penthouse


High- End Industrial Property For Sale In Longmeadow


Longmeadow Boulevard, , ,


SALES PRICE

\$ 1086681.00

 2000 qm

 rooms

 bedrooms

 bathrooms

 floors

 qm land area

 car spaces



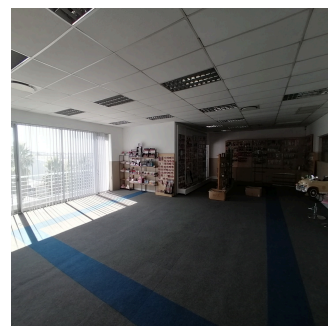
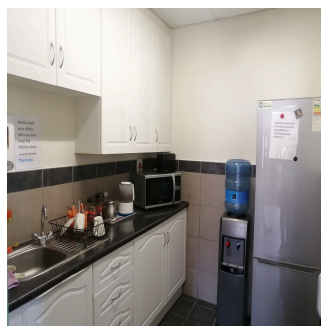
Anel Delpoit

Remax One Kramerville

Sandton, South Africa - Local Time



27 11 615 4911



This high-end warehouse and offices are for sale. This building is in the highly sought-after Longmeadow Business Estate, which places security first. Access is controlled 24 hours a day, seven days a week, and there is a safe perimeter.

Longmeadow is conveniently situated just two minutes' drive from the Edenvale off-ramp for the N3. Its easy accessibility to the R24 and R21 roads makes it a popular choice for courier and logistics companies that serve Gauteng.

The building features a modern design, large paved yard, 1500sqm warehouse and 500sqm double volume office block. The warehouse has good height and natural light. 3phase power is supplied with a 25kva generator.

3 large roller shutter doors accessing the warehouse, 1 on grade and 2 dock level. The large paved yard allows for truck access and ample staff and visitor parking.

The offices include reception, open plan, meeting rooms and boardroom.
2 kitchens servicing the office and warehouse, male and female toilets and changerooms in the warehouse.

Close to all amenities and Greenstone Shopping Mall. Great opportunity to secure premises in Longmeadow.

Available From: 02.07.2024

Floor: 4 Floors: 4 Year Built: 2017 Car Spaces: 4 Year Of Construction: 2017 Type: Office



Amenities

ID Property ID

Outdoor Amenities