

Penthouse

Sophisticated 4 Bedroom House For Sale In Hyde Park, Sandton

South Africa, KwaZulu-Natal, Berea, Hyde Close, , 2196,

SALES PRICE

USD 3290466.00

🏠 5000 qm

🏠 9 rooms

🛏 5 bedrooms

🚿 4 bathrooms

🏠 4 floors

📐 4 qm land area

🚗 4 car spaces



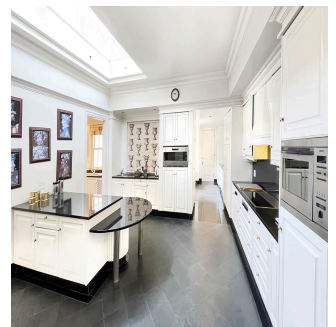
Nelson Ferreira

Pam Golding Properties Hyde Park

Sandton, South Africa - Local Time



27 82 600 4455



It's a once-in-a-lifetime chance to buy a luxurious estate on 15,000 square meters of land on Hyde Park's most sought-after and exclusive road. Residents will enjoy the safety of a boomed and guarded street as well as the freedom of acres of land and complete privacy.

People want to live on this street so much that it has armed guards and a police car 24 hours a day. The tree-lined, winding driveway and beautiful gardens set the tone for the home, which includes a stately front door with an extra parking area and porte coché, an inviting double-volume entrance, and gracious reception areas.

The home is designed to be a luxurious and elegant place to live, perfect for entertaining guests and providing all the comforts and amenities needed for family life.

Every window, every door has views of the enchanting gardens impeccably designed and kept perfectly manicured, with the second garden which is more exotic with towering trees, rose gardens, and ponds, creating an enchanting setting that allows for an ambiance of serenity and tranquility to pervade one's senses and being.

Excellent security with cameras, electric fence, beams and 24-hour guard house. Designed by renowned architect Phillip Watermeyer, master built to exacting standards of perfection with attention to detail and faultless workmanship where the distinctive features include grand heights, excellent proportions and baronial spaces.

Numerous interflowing reception rooms, consisting of formal lounge (with two seating areas), dining room and informal lounge which leads to an enormous entertainer's patio (with both dining and seated areas and vaulted ceilings), which has the advantage of being enclosed, ideal for both summer and winter casual entertaining and family living with views rolling verdant green lawns and gardens with statues and water features.

Well-designed kitchen with central island. Separate laundry, scullery, pantry, cold-room.

SECOND LEVEL

Luxurious Main bedroom suite opening to balcony with views, with his and hers dressing rooms and superb bathroom.

3 further spacious bedroom suites.

Fully fitted study - with feature mahogany wood panels.

SPECIAL FEATURES

GARDEN LANDSCAPING BY DAVID HICKS.

Staff accommodation - 5 bedroom suites, lounge, dining room, kitchen

Tennis court.

Finished to perfection with only the best of yesteryear

This home awaits the eye of the discerning to bring it to its former glory.

A home with soul and heart with a pervasive aura of peace and tranquillity cocooned by the beauty of nature.

Features

Tiled roof

Plastered walls

Wood windows

Wall boundary

Exterior features including covered patio, enclosed patio, patio and staff accommodation

Landscaped garden with pet friendly

24-hour manned security including 24-hour response, automatic gates, electric fence, electronic beams, guard house and intercom.

View strictly by appointment only.

Available From: 28.06.2024

Floor: 4 Floors: 4 Year Built: 2017 Car Spaces: 4 Year Of Construction: 2017 Type: Office



Amenities

ID	Property ID	Built In Wardrobes	Ensuite
Reception Area	Study Room		

Outdoor Amenities

24 Hour Security	Fully Fenced	Garage	Garden
Secure Parking			