

Penthouse

# Superb 4 Bedroom Townhouse For Sale In Hyde Park, Sandton

South Africa, KwaZulu-Natal, Berea, Hyde Close, , 2196,

SALES PRICE

**R 5300000.00**

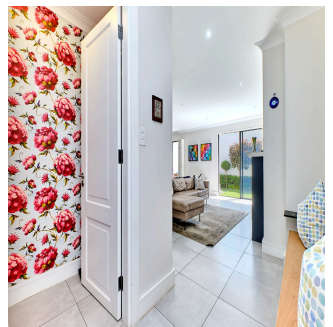
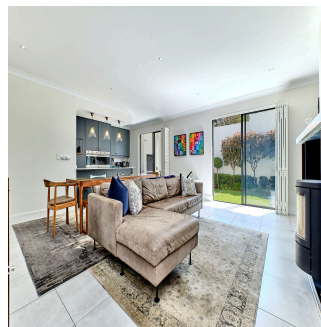
- 264 qm
- 8 rooms
- 4 bedrooms
- 4 bathrooms
- 4 floors
- 4 qm land area
- 4 car spaces



**Nelson Ferreira**

Pam Golding Properties Hyde Park  
Sandton, South Africa - Local Time

27 82 600 4455



There are only 14 townhouses like this one in this small neighborhood, and this one has a private garden. This home is not to be missed. It was designed by a famous architect and was finished to the best standards all over.

Downstairs;

the generous open plan living / dining room is complemented by the magnificent designer kitchen with Smeg hob and double ovens. Sliding doors lead out to the covered patio, with built in braai, and quaint garden with more than a hint of the Mediterranean.

Feature wood combustion fireplace in the living room. Guest toilet and direct access from the double garage. Upstairs is the master bedroom with full en suite bathroom and sliding doors onto a balcony with retractable awning.

There are a further three en suite bedrooms and a pyjama lounge or workspace. Security plantation shutters throughout, inverter power backup, temperature control to the bedrooms and a 26 square metre staff suite / studio.

Monthly Levy R5 400

Reserve levy R374

Features

Main bedroom with en-suite bathroom, air conditioner, balcony, sliding doors, built-in cupboards and laminate wood floors

Bedroom 2 with en-suite bathroom, air conditioner, juliet balcony, sliding doors, built-in cupboards and laminate wood floors

Bedroom 3 with en-suite bathroom, built-in cupboards and laminate wood floors

Bedroom 4 with en-suite bathroom, juliet balcony, sliding doors, built-in cupboards and laminate wood floors

Bathroom 1 with bath, double vanity, shower and tiled floors

Bathroom 2 with basin, shower, toilet and tiled floors

Bathroom 3 with basin, shower, toilet and tiled floors

Bathroom 4 with basin, shower, toilet and tiled floors

Entrance hall

Kitchen with patio, sliding doors, tiled floors, quartz tops, breakfast bar, dish-wash machine connection, double eye-level oven, extractor fan and glass hob

Open plan living room with patio, sliding doors, wood fireplace and tiled floors

Guest cloakroom

Aluminium windows with american shutters

General building features including ducted aircon

Exterior features including braai, covered patio and inverter

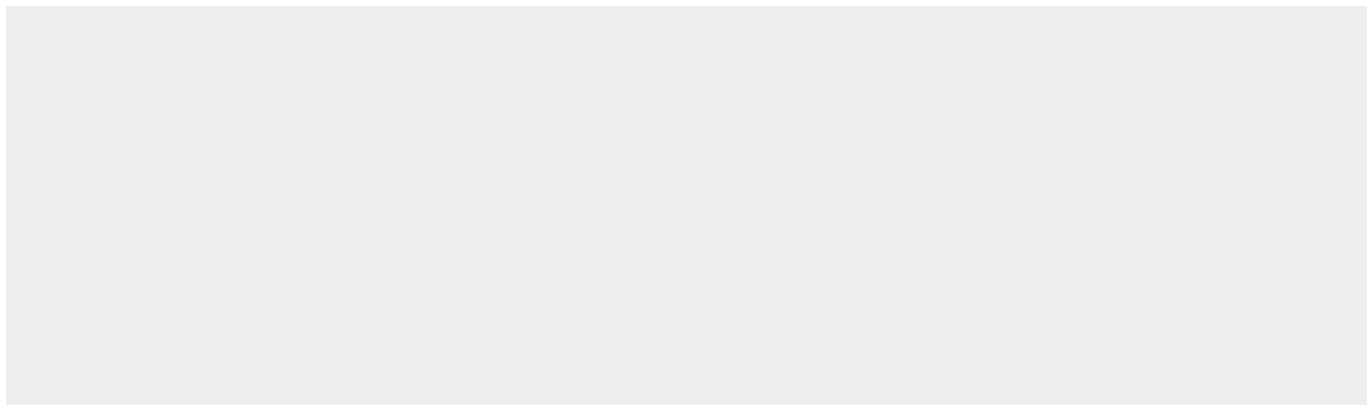
Garden

24 hour manned security

Located on desirable Melville Rd, this complex allows for easy access to all surrounding business and retail nodes as well as several excellent schools.

Available From: 27.06.2024

Floor: 4    Floors: 4    Year Built: 2017    Car Spaces: 4    Year Of Construction: 2017    Type: Office



## Amenities

ID	Property ID	Built In Wardrobes	Ensuite
Study Room			

## Outdoor Amenities

24 Hour Security	Garage	Secure Parking	Swimming Pool
------------------	--------	----------------	---------------