

Penthouse

Exquisite 3 Bedroom Apartment For Sale In Wynberg Upper

South Africa, KwaZulu-Natal, Berea, , , 7824,

SALES PRICE

R 3900000.00

- 🏠 180 qm
- 🏠 6 rooms
- 🛏️ 3 bedrooms
- 🚿 3 bathrooms
- 🏠 3 floors
- 📏 3 qm land area
- 🚗 3 car spaces

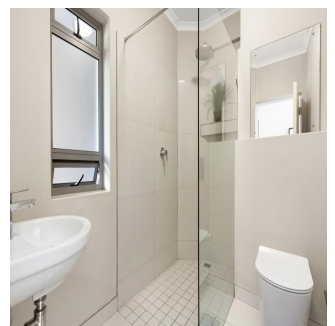
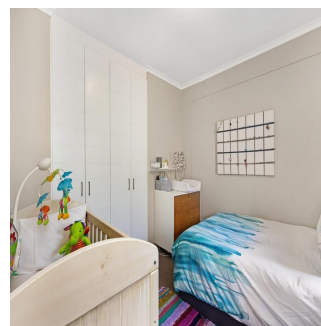


Sally Gracie

Chas Everitt Cape Town South

Cape Town, South Africa - Local Time

📞 27 21 712 5029



Downstairs opens up to an inviting living space with laminate flooring throughout, complemented by a wood fireplace for cozy evenings. The open-plan kitchen is plumbed for two appliances, featuring an electric oven, hob, and extractor fan.

Abundant built-in cupboards with LED strips above and below add a touch of sophistication. A convenient broom cupboard in the entrance adds to the practicality of the space.

The two bedrooms on the lower level, have built-in cupboards and are both carpeted- with the one having the main bathroom en-suite with a shower, toilet, basin, and a heated towel rail.

The second downstairs bedroom has a separate bathroom (with toilet, basin & shower) which doubles up as a guest toilet. Ascend the stairs, where laminate flooring leads you to the upper level bedroom, also carpeted and with ample built-in cupboards - lie in bed and enjoy the natural light and the sunrise on the mountains.

Access from the bedroom to an ensuite with a toilet, basin and a walk-in shower with a door from the shower leading to the back balcony, providing a private outdoor retreat and a place to hang the washing.

All bedrooms have underfloor heating and the apartment has a solar geyser and is highly energy efficient with a low annual energy consumption. The upper level also features a front balcony with a patio pergola, offering a perfect spot to unwind.

Enjoy the convenience of a built-in braai plus a sink, creating an ideal space for entertaining guests or simply enjoying the outdoors. The remote controlled garage has extra storage space at the rear, plus a plug point for added convenience.

An additional undercover parking bay within the premises ensures that your vehicles are securely accommodated as well as the luxury of being undercover in the winter months.

Additional features include:

A control room with satellite dish facilities and fiber connectivity. With active street cameras, electric fencing and armed response it is really secure.

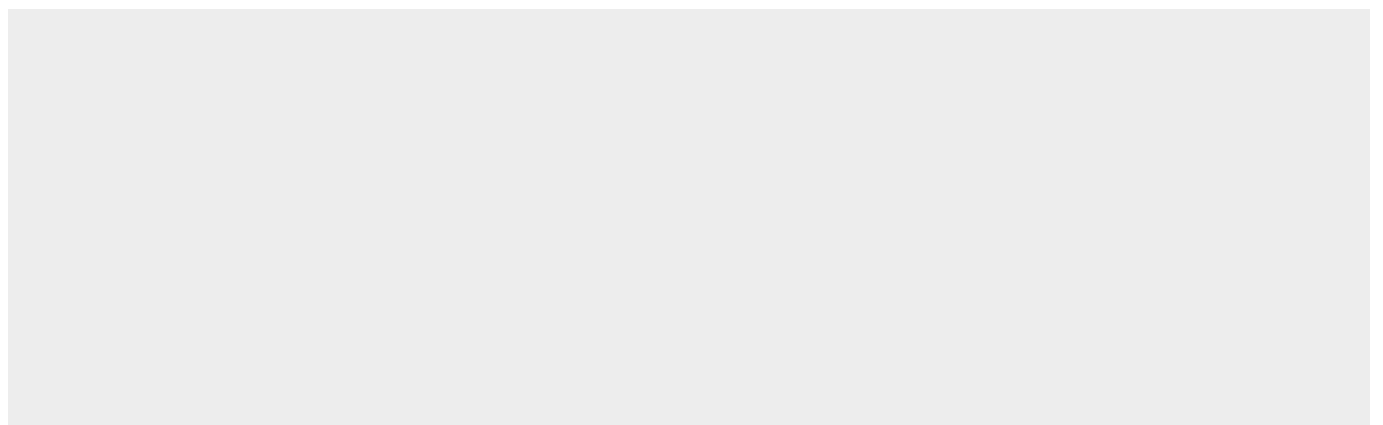
Please note that the lift does not operate during load shedding, but you have the option to use either the front or rear stairwell for access.

The apartment is pet friendly.

Please get in touch with us for additional details!

Available From: 10.06.2024

Floor: 4 Floors: 4 Year Built: 2017 Car Spaces: 4 Year Of Construction: 2017 Type: Office



Amenities

ID	Property ID	Reception Area
----	-------------	----------------

Outdoor Amenities

Garage	Secure Parking
--------	----------------