

Penthouse


Commercial & Industrial Building For Sale In Clairwood

South Africa, KwaZulu-Natal, Berea, , , 4052,

SALES PRICE

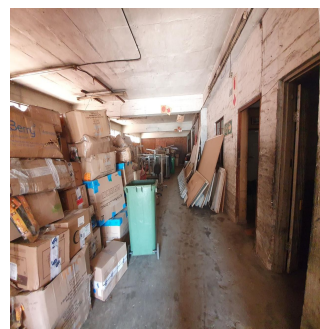
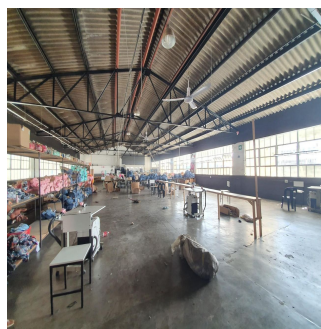
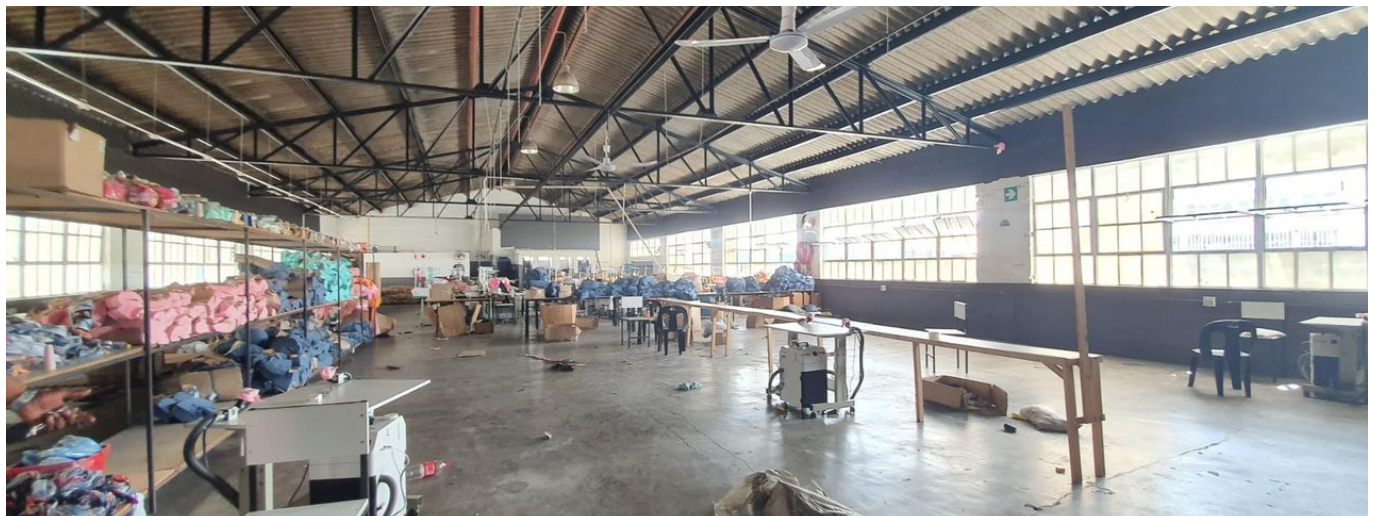
ZAR 6950000.00

- 1700 qm
- rooms
- bedrooms
- bathrooms
- floors
- qm land area
- car spaces



Leeanne Grant
 Chas Everitt Durban South
 Randburg, South Africa - Local Time

27 11 801 2500



Clairwood is a busy hub of prime commercial and industrial activity. Total land size is 1243 square meters, with a three-story building space of 1700 square metres and a spacious yard or parking space of around 500 square metres. The building's size includes offices, warehouses, change rooms, restrooms, a canteen-style area for employees, and a lot more potential to meet your specific business needs or if you want to multi-tenant the building for total rental income as an investor. The ground floor warehouse requires some TLC, including painting. It is currently used only for storage and is divided into two sections with separate entrances. 380 amps of three-phase power for industrial machines. Container access, three roller shutter doors, and easy access for M4, N2, and N3.

Contact the agent for further information or to make viewing arrangements.

Available From: 21.05.2024

Floor: 4 Floors: 4 Year Built: 2017 Car Spaces: 4 Year Of Construction: 2017 Type: Office



Amenities

ID Property ID

Outdoor Amenities