

Penthouse


A Grade Commercial Office For Sale In Essenwood


Stephen Dlamini Road, , ,

SALES PRICE


ZAR 4500000.00

 400 qm


 rooms

 bedrooms

 bathrooms

 floors

 qm land area

 car spaces



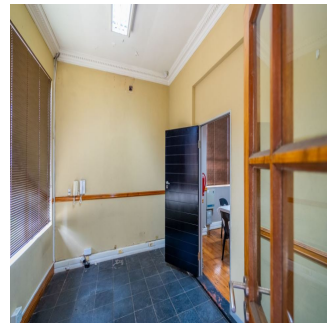
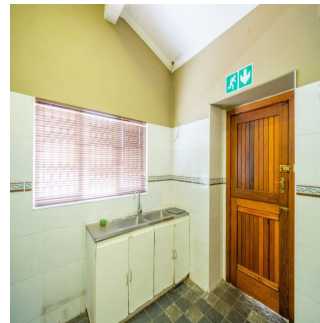
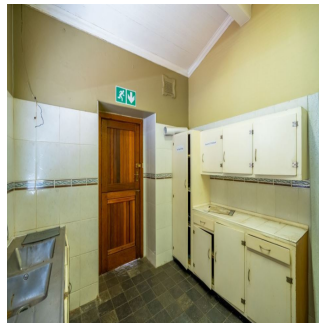
Judith Mac Nicol

Pam Golding Properties Durban

Berea, South Africa - Local Time



27 31 308 6700



Excellent location in Overport Drive, high visibility together with plans and retail stores and apartments. Renders available. Currently offices, boardroom, kitchen, toilets, rest rooms etc.

Features:

Bathroom with toilet

Open plan boardroom

Aluminium windows

Security including alarm, burglar bars and security gates

Available From: 02.05.2024

Floor: 4

Floors: 4

Year Built: 2017

Car Spaces: 4

Year Of Construction: 2017

Type: Office



Amenities

ID	Property ID
----	-------------

Outdoor Amenities