








Penthouse


Commercial Building For Sale In Durban Central

, , 4001,


SALES PRICE

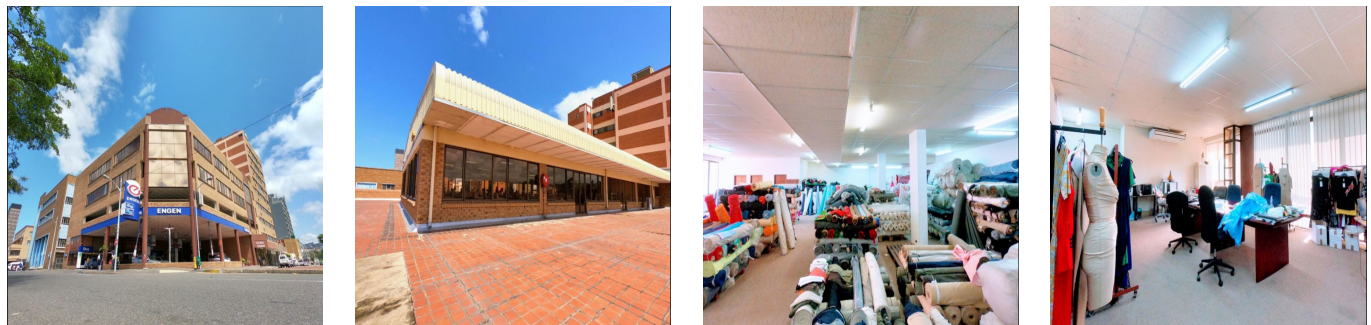
R 30000000.00

-  5201 qm
-  rooms
-  bedrooms
-  bathrooms
-  floors
-  qm land area
-  car spaces



Judith Mac Nicol
 Pam Golding Properties Durban
 Berea, South Africa - Local Time

 27 31 308 6700



The building was originally designed as a factory/warehouse space for clothing manufacturing, but it has since been adapted and divided into smaller components to accommodate a variety of uses, including a jewellery workshop, a factory and warehouse (clothing), offices, and a petrol filling station with shop, workshop, and stores.

The several floor levels are organized as follows: Ground floor level. A petrol station with a huge forecourt, shop, workshop, and storage facilities. A mezzanine office is accessible from the shop. A warehouse featuring offices, a workshop, and a small store. A guardhouse has been installed at the bottom of the ramp at Louise Lane. A passageway connects Louise Lane and Derby Street. First floor level. This level includes 34 undercover parking spaces accessed via a concrete ramp from Louise Lane, as well as a small warehouse/factory area. Second and third floor levels.

These levels have been separated into smaller areas to accommodate warehouses, offices, factories, a church, and a crèche. The landlord's offices are on the third floor. Fourth storey (rooftop) A single volume open plan warehouse/factory space with offices and restrooms. Upper floor levels are accessible via a central stairwell, a single lift, and two sets of fire escapes.

