

Penthouse

# Fully Furnished 2 Bedroom Apartment For Rent In Umhlanga Ridge

East Row, , ,

MONTHLY RENTAL PRICE

**R 15000.00**

- 70 qm
- 4 rooms
- 2 bedrooms
- 2 bathrooms
- 2 floors
- 2 qm land area
- 2 car spaces

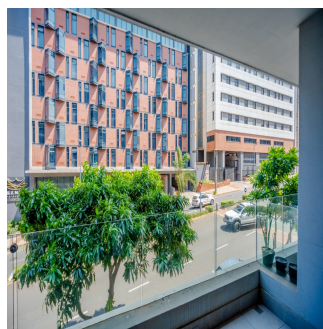
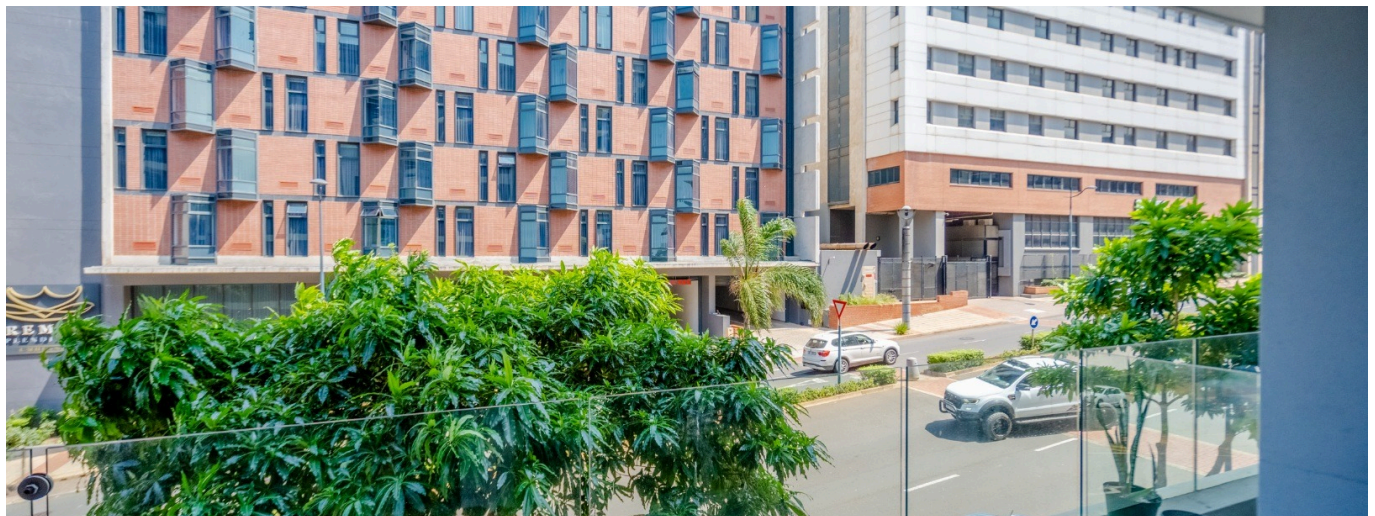


**Chris Pearson**

Remax Address Berea

Berea, South Africa - Local Time

27 31 313 1310



With upscale kitchen, bathroom, and bedroom finishes, this apartment was created with comfort and luxury in mind. The Modern Complex has heated swimming pool, gym, undercover parking, and round-the-clock security. With vibrant decor, 41 Degrees East East is situated on the crest of Umhlanga Ridge, offering expansive views of Umhlanga, La Lucia, and the warm Indian Ocean. The furnished apartment features a balcony that offers breathtaking views and is suited for a lock up and go lifestyle. There is designated covered parking for one unit.

Monthly Rental - R 15 000.00 – Fully Furnished as per pictures Security Deposit - R 15 000.00

Utility Deposit - R 2 000.00

Credit Check & Admin Fee – R 900.00

Total R 32 900.00

Viewings will be confirmed after TPN Credit Checks are Done

Salary must be 3x the Monthly Rental Amount

Lease Term 12 Months with option to extend

Electricity & Water on Municipality Bill

Maximum 4 Occupants

No Pets

Complex Boasts

- Heated Pool, Gym & undercover parking
- 24 hour security with access control
- Fully equipped gym
- Heated pool
- Fibre in the area
- Close proximity to all amenities
- Fully fitted service yard
- Fully fitted kitchen
- Premium tiles throughout
- Grohe Brassware
- Geberit Sanware

Offering direct access to the balcony, this apartment comes with 2 separate bedrooms and a fully equipped kitchen & a flat-screen TV

Umhlanga rocks Beach is 2.8 km from the apartment, while Bronze Beach is 2.8 km from the property. The nearest airport is King Shaka

International Airport, 18 km from 41 Degrees

Little has been spared on the design and finishes of the apartment interiors, with modern and timeless finishes apparent from the porcelain tiled

floors, to the kitchens, equipped with granite surfaces, and appliances. Built in cupboards are standard in every bedroom, and the bathrooms

boast Geberit and Grohe fittings. Part of the design concept was to provide convenience, as each unit offers a storeroom and laundry area.

Common areas include a swimming pool, surrounded by a relaxation deck for those perfect sunny summer days and a gym facility creating live

and play spaces. In close proximity to a host of sumptuous restaurants in Umhlanga Village, La Lucia and Umhlanga Ridge, and a host of

premium retail stores and centre's scattered around Umhlanga, including Gateway Theatre of Shopping, La Lucia Mall and Cornubia Shopping

Centre, this development has pride of place when it comes to location. Potential Tenants must meet the following minimum criteria for a successful

lease application –

Salary must be 3x the Monthly Rental Amount

Valid SA ID or Valid Visa or Work Permit for the duration of the lease – 12 Months Recent 3 months bank Statements or Recent 6 months bank statements if self employed Confirmation of Employment & Recent 3 Months' Salary Slips Present Proof of Residence in South Africa Clear TPN Credit Record

Initial Costs Due on signing the lease before moving in. Make an appointment to see it today to discover its unique charm and potential.

Available From: 27.04.2024

Floor: 4    Floors: 4    Year Built: 2017    Car Spaces: 4    Year Of Construction: 2017    Type: Office



### Amenities

ID	Property ID	Air Conditioning	Ensuite
Entertainment Room	Gym	Laundry Area	Lounge

### Outdoor Amenities

24 Hour Security	Garage	Swimming Pool
------------------	--------	---------------