

Penthouse


Well Equipped 1 Bedroom Apartment For Sale In Sandown, Sandton

South Africa, Gauteng, Midrand, , , 2196,

SALES PRICE

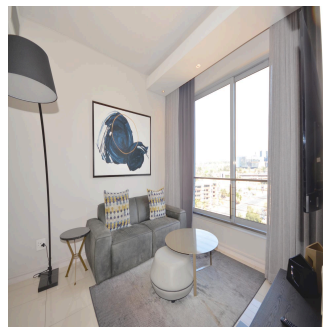
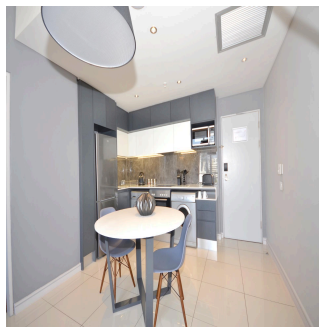
ZAR 2250000.00

- 89 qm
- 2 rooms
- 1 bedrooms
- 1 bathrooms
- 1 floors
- 1 qm land area
- 1 car spaces



Guy Gillespie
 Guy Gillespie Properties
 Cape Town, South Africa - Local Time

27 83 740 3619



Situated at on 101 Katherine Street. The Capital on The Park is cosmopolitan living at its best. Here luxury living merges seamlessly with the benefits of hotel living. Experience all the comforts of home combined with all the perks of a hotel. From the finest restaurants and a wide range of luxurious in-house comforts including a fitness centre and spa, convenience store, deli, coffee shop and champagne bar, The Capital on The Park offers you everything you need in one perfect place. The Capital on The Park is just a 10 minutes walk from the Gautrain Sandton station, allowing for easy travel to the CBD, Pretoria and OR Tambo International Airport. Whether you're a commuter, a regular visitor from across the border or someone who just wants a convenient home-base in the heart of Sandton, the Capital on The Park development will provide you with the ideal lock-up-and-go apartment. Contact us today to schedule a viewing!

Available From: 20.03.2024

Floor: 4 Floors: 4 Year Built: 2017 Car Spaces: 4 Year Of Construction: 2017 Type: Office



Amenities

ID	Property ID	Ensuite
----	-------------	---------

Outdoor Amenities

Swimming Pool