

Penthouse

Premium Grade 2 Bedroom Apartment For Sale In Sandown, Sandton

South Africa, Gauteng, Midrand, , , 2196,

SALES PRICE

ZAR 3400000.00

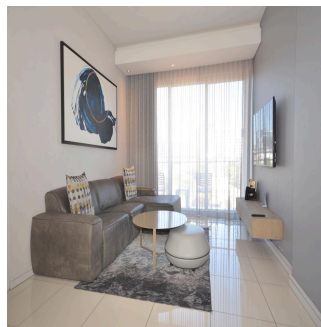
- 80 qm
- 4 rooms
- 2 bedrooms
- 2 bathrooms
- 2 floors
- 2 qm land area
- 2 car spaces



Guy Gillespie

Guy Gillespie Properties
Cape Town, South Africa - Local Time

27 83 740 3619



Situated at 101 Katherine Street. The Capital on the Park is the best place to live in a city. Here, living in style and enjoying the benefits of staying in a hotel go hand in hand. You'll have all the comforts of home and all the benefits of a hotel. The Capital on the Park has the best restaurants and a lot of high-end amenities inside, like an exercise center, spa, convenience store, deli, coffee shop, and champagne bar. It's the perfect place to get everything you need. The Gautrain Sandton stop is only a 10-minute walk from The Capital on The Park. This makes it easy to get to the city center, Pretoria, and OR Tambo International Airport. This is a great lock-up-and-go apartment in the Capital on The Park development for people who commute, visit from across the border often, or just want a handy home base in the middle of Sandton.

Fully furnished and equipped

Scenic views

Access to Park. Get in touch with us right away to set up a private showing.

Available From: 19.03.2024

Floor: 4 Floors: 4 Year Built: 2017 Car Spaces: 4 Year Of Construction: 2017 Type: Office



Amenities

ID	Property ID	Air Conditioning	Ensuite
Gym	Lounge		

Outdoor Amenities

24 Hour Security	Clubhouse	Garage	Swimming Pool
------------------	-----------	--------	---------------