








Penthouse

Brand New Prime Industrial Property To Rent In Blackheath Industrial

South Africa, Gauteng, Midrand, , , 7580,

MONTHLY RENTAL PRICE

NGN 6127711.99

-  2945 qm
-  rooms
-  bedrooms
-  bathrooms
-  floors
-  qm land area
-  car spaces

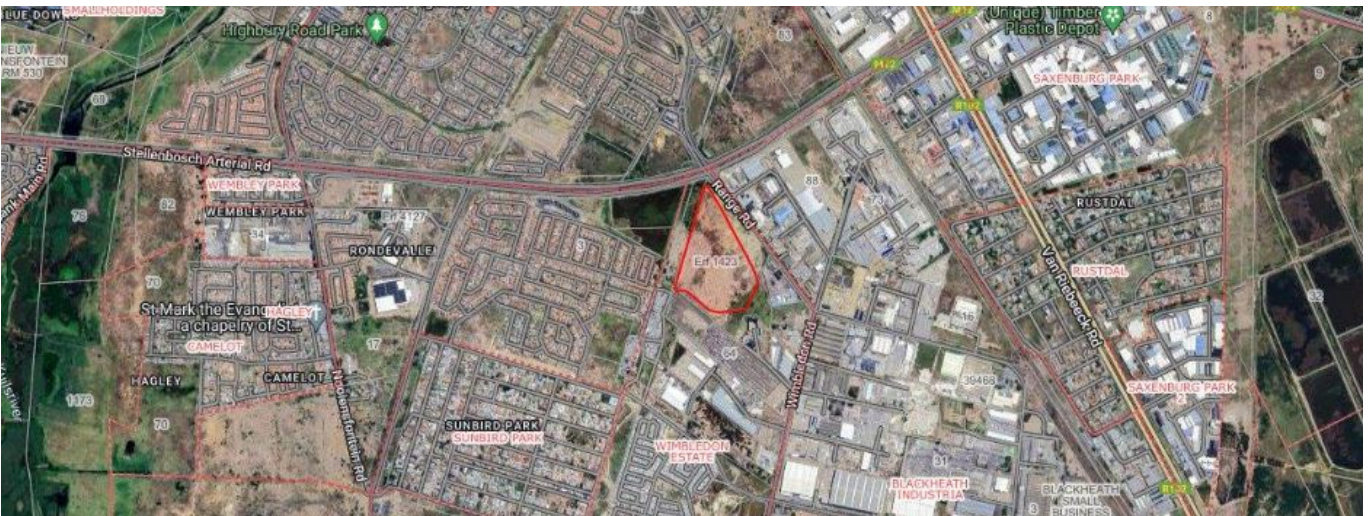


Lance Lawson

Bravo Real Estate

Cape Town, South Africa - Local Time

 27 71 145 8397



Ten units with floor areas ranging from 2,945 m2 to 5,200 m2 are available for rental beginning on April 1, 2024. Phases one and two of this amazing industrial park's development have been completed. Phase 2 is under ongoing, and apartments can be constructed precisely to tenant requirements. The excellent property is contemporary, situated near the R300, N1, N2, and surrounding major thoroughfares, and it is part of the well-established Blackheath Industrial district. Very close to the Zevenwacht Shopping Center, which is only a 10-minute walk away, and easily accessible public transportation. Numerous logistics and FMCG companies, as well as an increasing number of migrant enterprises relocating to the Western Cape, are drawn to this node.

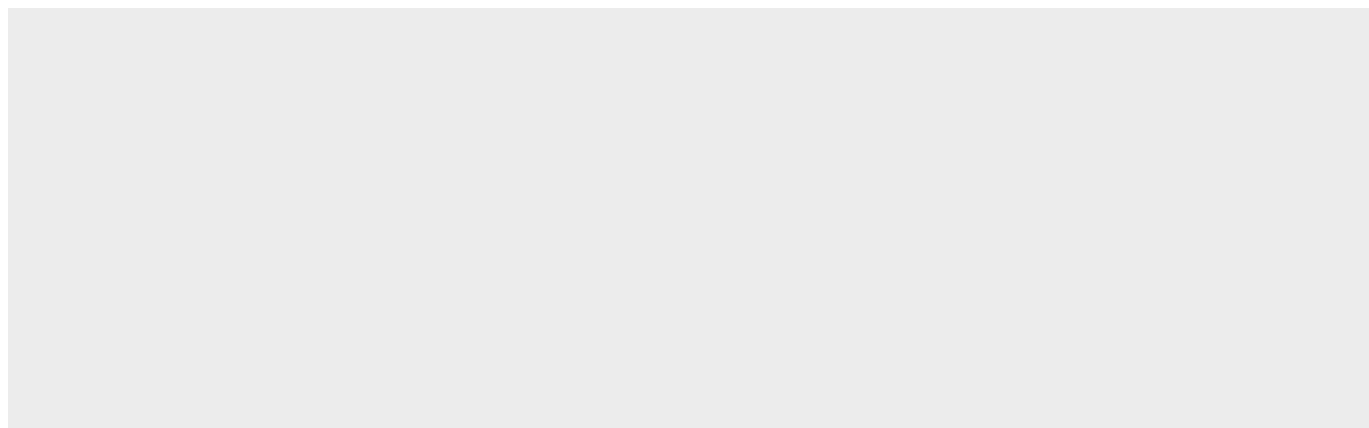
The key features include:

- Various units ranging between 2,945m2 to 5,200m2 of total Gross Lettable Area (GLA)- Warehouse space- Office areas- Reception- Plenty of yard space with minimum depth of 35m to face of warehouse- Parking for visitors- Load bearing capacity up to 90kN- 5m depth canopy over all docking doors- FM3 flooring- Fire sprinkler system compliant- Backup pumps and tanks- 3-phase power with 250 Amps- Clear height of 9m to eaves- Electric fencing and controlled boom access.- Dock levelers and roller doors- Zoning: General Industrial 1- Rate: R85/m2 (gross rental excluding VAT)- Lease period: 3-5 years. Available from 1 April 2024.

Get in touch with us right away to set up a private showing.

Available From: 11.03.2024

Floor: 4 Floors: 4 Year Built: 2017 Car Spaces: 4 Year Of Construction: 2017 Type: Office



Amenities

ID Property ID

Outdoor Amenities