

Penthouse

1 Bedroom Modern Apartment For Rent In Ellipse

Waterfall Drive, , ,

MONTHLY RENTAL PRICE

\$ 11900.00

SALES PRICE

\$ 0.00

- 🏠 1224 qm
- 🏠 2 rooms
- 🛏 1 bedrooms
- 🚿 1 bathrooms
- 🏠 1 floors
- 📏 1 qm land area
- 🚗 1 car spaces



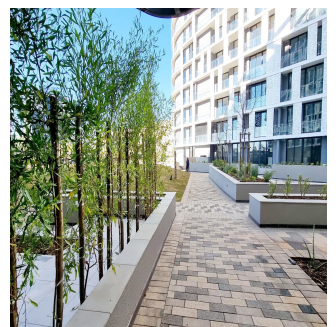
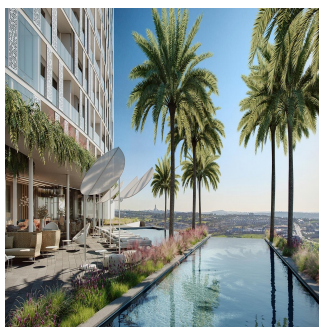
Joelle McMaster

Luxliv Property Group

Centurion, South Africa - Local Time



27 83 384 0618



Welcome to this beautiful apartment in the middle of Waterfall's lively center. When you walk inside, the kitchen and living room are connected, making the space feel open and welcoming. The kitchen has high-end tools, such as a SMEG fridge/freezer that is built in and an easy-to-use washing machine.

There is a modern shower in the bedroom's bathroom, which has been decorated with style. After a long day, this private haven is a peaceful place to unwind and relax.

The covered porch is one of the best things about this apartment. It's a great place to enjoy the outdoors and have people over. This area can be used for many things, so it's ready for you to enjoy your morning coffee or hold a party.

As a premier location, The Luna Club at Ellipse Waterfall stands out by providing a wide range of wellness, business, and leisure facilities. The wellness center has an indoor gym, steam shower, sauna, and boutique spa, so it can help with all aspects of health and relaxing. For business purposes, our cutting-edge Business Center has elegant boardrooms and meeting rooms to meet the needs of corporations. A Cigar and Private Lounge adds a touch of class, and the Children's Entertainment Area is a place for the whole family to have fun. Having both a lap pool and a temperature-controlled pleasure pool shows that we care about giving people a variety of ways to have fun. The club also has a Private Dining area, a gas braai area outside, fire pits, and a boma for getting together with other people. In addition, there is a well-equipped library and a coffee shop where you can rest and think. The Luna Club at Ellipse Waterfall is the perfect mix of luxury, ease of living, and a fulfilling way of life.

The hotel is conveniently located across the street from the famous Mall of Africa, so you can easily get to many places to shop, eat, and have fun. Live in the city while enjoying the peace and quiet of this lovely apartment building.

If you want to make this amazing apartment your home, don't miss your chance. Get in touch with us right away to set up a showing and see for yourself what living at Ellipse is like.

Available From: 16.12.2023

Floor: 4 Floors: 4 Year Built: 2017 Car Spaces: 4 Year Of Construction: 2017 Type: Office



Amenities

ID	Property ID	Lounge
----	-------------	--------

Outdoor Amenities

Secure Parking