

Penthouse

5 Strata Semi-Detached Townhouse

Hong Kong, Hong Kong Island, Mid-levels West, , ,

SALES PRICE

\$ 1936200.00

- 4104 qft
- 6 rooms
- 3 bedrooms
- 3 bathrooms
- 3 floors
- 3 qft land area
- 3 car spaces

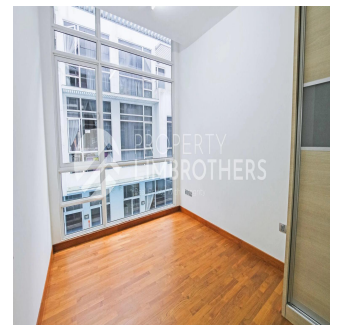
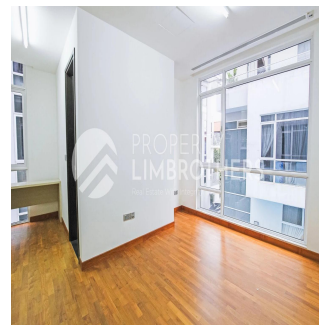
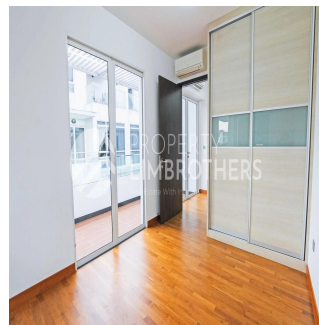
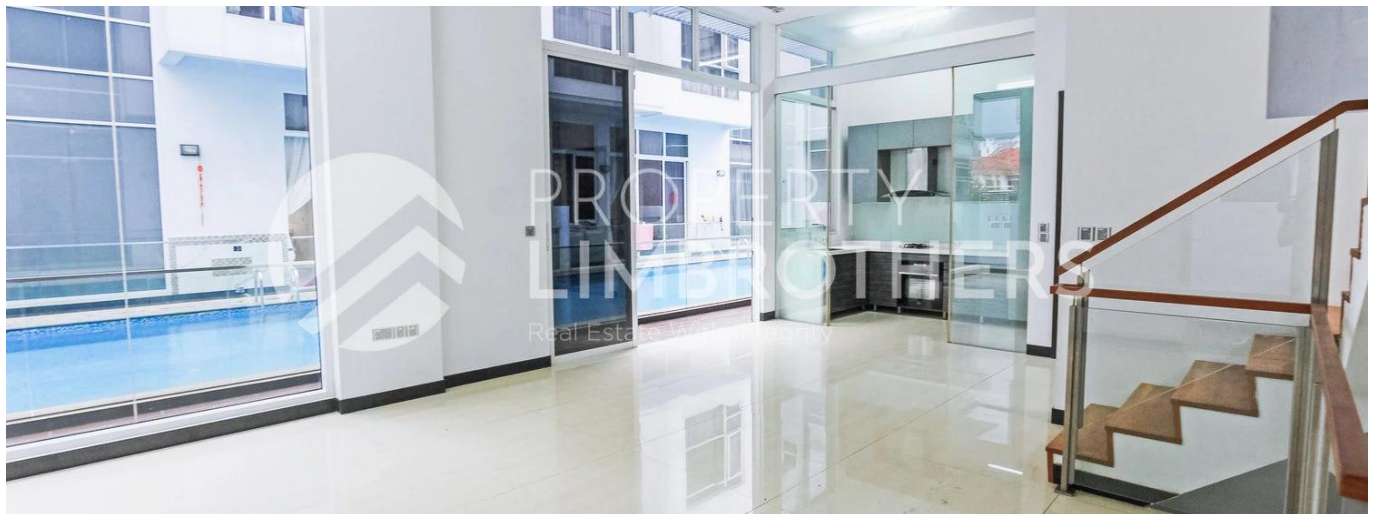


Melvin Lim

Property Lim Brothers

Singapore, Singapore - Local Time

+65 90676710



We have 5 Strata Semi-Detached Townhouse available! Each unit has 3-Storey with basement and attic. These houses are a seamless blend of contemporary convenience and classic Singapore charm within the Kovan vicinity. Features of this houses include 5 bedrooms and 4 bathrooms spread across 4,532 to 4,779 SQFT of floor area. One of the highlights of these homes are without doubt the direct entry you have into the swimming pool right from your patio on the first storey. Hillsgrove is designed to cater to any occasion, any lifestyle, any imagination. From calm reflecting pools and thoughtful barbeque decks to the intrinsic function and interior of each home. Crafted with style, beauty and comfort in mind. Modernity by design – is the designer’s key theme. Space expands visually with wide hallways, open living room and bedrooms are all thoughtfully planned and designed.

Available From: 05.08.2019

Floor: 4 Floors: 4 Year Built: 2017 Car Spaces: 4 Year Of Construction: 2017 Type: Office



Amenities

ID Property ID

Outdoor Amenities