

Penthouse

# Brand New Industrial Warehouse For Sale In Linbro Park

, , 2090,

VERKAUFSPREIS

**\$ 2516700.00**

2865 qm 0 Zimmer 0 Schlafzimmer 0 Badezimmer

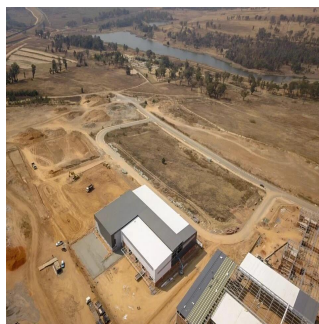
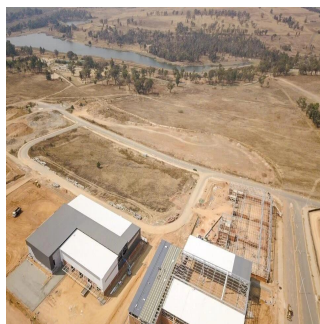
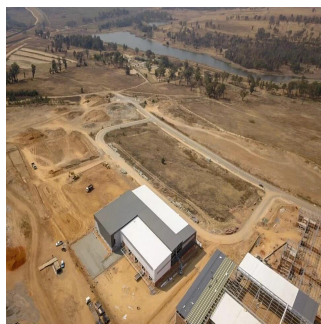
0 Etagen 0 qm Grundstücksfläche 0 Autostellplätze



**Dion Williams**

Api Property Group  
Sandton, South Africa - Ortszeit

+27 0795174743



This premium building comprises of 2,370sqm warehouse space and 458sqm of offices to rent in the new development called Longlake. This development offers easy access to the N3 highway and will also have access to the new K101. This property is situated close to Busamed Modderfontein Private Hospital. The warehouse has four roller shutter doors available for off-loading and receiving with a canopy covering the doors. There's A grade office component that will be ideal for a head office as well as neat staff ablutions.

Verfügbar Von: 08.07.2019

Etage: 4    Etagen: 4    Baujahr: 2017    Pkw-Stellplätze: 4    Baujahr: 2017    Typ: Büro

