

Penthouse

2 Bedroom Study Vida Residences Downtown Burj View

'''

VERKAUFSPREIS

\$ 3100000.00

🏠 1378 qft 🛏️ 0 Zimmer 🛏️ 2 Schlafzimmer 🚿 3 Badezimmer

🏗️ 3 Etagen 📏 3 qft Grundstücksfläche 🅅 3 Autostellplätze



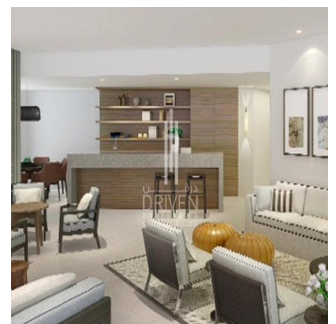
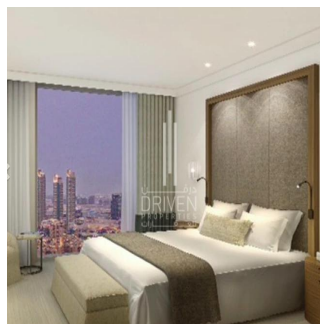
Chris Pearson

Re/Max Address - Berea

Berea, South Africa - Ortszeit



27 31 313 1310



- Luxury serviced Apartment - High Floor - Unit Type: Corner Middle - View: Burj Khalifa and Boulevard - Kitchen: Semi Open & Fully Fitted

Verf?gbar Von: 01.01.1970

Etage: 4 Etagen: 4 Baujahr: 2017 Pkw-Stellpl?tze: 4 Baujahr: 2017 Typ: Büro



Luxury serviced apartment development by the Vida Hotels & Resorts.

Ausstattung

ID Eigenschaft ID

Ausseneinrichtung